

CHERP antibody

Cat. No. GTX15951

Host	Rabbit
Clonality	Polyclonal
Isotype	IgG
Applications	WB, ICC/IF, IHC-P, ELISA
Reactivity	Human, Mouse, Rat, Monkey, Baboon

Package
100 µg

Applications

Application Note

*Optimal dilutions/concentrations should be determined by the researcher.

Suggested dilution	Recommended dilution
WB	1:500
ICC/IF	1:200
IHC-P	Assay dependent
ELISA	Assay dependent

Not tested in other applications.

Calculated MW 104 kDa. ([Note](#))

Properties

Form	Liquid
Buffer	Tris/Glycine, 0.5% BSA, 30% Glycerol
Preservative	0.02% Sodium azide
Storage	Store as concentrated solution. Centrifuge briefly prior to opening vial. For short-term storage (1-2 weeks), store at 4°C. For long-term storage, aliquot and store at -20°C or below. Avoid multiple freeze-thaw cycles.
Concentration	0.7 mg/ml (Please refer to the vial label for the specific concentration.)
Immunogen	Synthetic peptide corresponding to a region within internal sequence amino acids 846-913 of human CHERP. Sequence: EQGIQDPIKG GDVRDKWDQY KGVGVALDDP YENYRRNKSY SFIARMKARD
Purification	Purified by affinity chromatography
Conjugation	Unconjugated



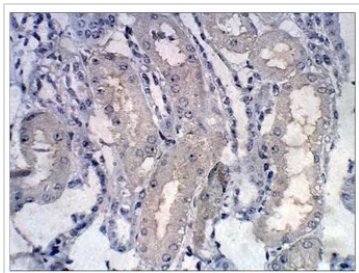
For full product information, images and publications, please visit our [website](#).

For laboratory research use only. Not for any clinical, therapeutic, or diagnostic use in humans or animals. Not for animal or human consumption.

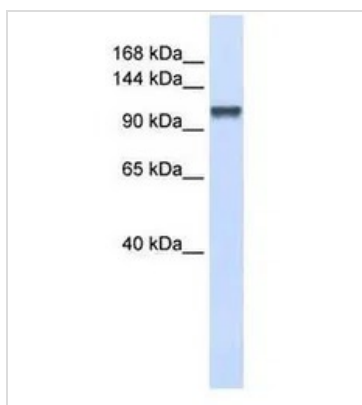
Note

Purchasers shall not, and agree not to enable third parties to, analyze, copy, reverse engineer or otherwise attempt to determine the structure or sequence of the product.

DATA IMAGES

**GTX15951 IHC-P Image**

IHC-P analysis of baboon kidney tissue using GTX15951 CHERP antibody.
Dilution : 1:100

**GTX15951 WB Image**

WB analysis of 293T cell lysate (10 ug) using GTX15951 CHERP antibody.



For full product information, images and publications, please visit our [website](#).