

# IL6 antibody [1B1-B10-D2]

**Cat. No. GTX16028**

<b>Host</b>	Mouse
<b>Clonality</b>	Monoclonal
<b>Isotype</b>	IgG
<b>Applications</b>	WB, ELISA
<b>Reactivity</b>	Human

**Package**  
100 µg

## Applications

**Calculated MW** 24 kDa. ( [Note](#) )

**Product Note** The mouse anti-human IL-6 antibody specifically detects targets derived from human recombinant protein at various concentrations. Cross reactivity with mouse and rat are expected from sequence similarity.

## Properties

**Form** Liquid

**Buffer** PBS

**Preservative** No preservatives

**Storage** Store as concentrated solution. Centrifuge briefly prior to opening vial. For short-term storage (1-2 weeks), store at 4°C. For long-term storage, aliquot and store at -20°C or below. Avoid multiple freeze-thaw cycles.

**Concentration** 1 mg/ml (Please refer to the vial label for the specific concentration.)

**Immunogen** Mouse Anti-Human Interleukin-6 Antibody

**Conjugation** Unconjugated

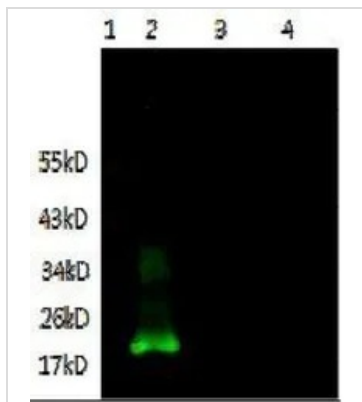
**Note** For laboratory research use only. Not for any clinical, therapeutic, or diagnostic use in humans or animals. Not for animal or human consumption.

Purchasers shall not, and agree not to enable third parties to, analyze, copy, reverse engineer or otherwise attempt to determine the structure or sequence of the product.



For full product information, images and publications, please visit our [website](#).

## DATA IMAGES



### GTX16028 WB Image

WB analysis of (1) protein marker, (2) recombinant protein IL6, (3) 293T lysate and (4) SP2/0 lysate using IL6 antibody [1B1-B10-D2] at a concentration of 1 $\mu$ g/ml.



For full product information, images and publications, please visit our [website](#).