

MAGE 1 antibody

Cat. No. GTX16031

Host	Rabbit
Clonality	Polyclonal
Isotype	IgG
Applications	IHC-P, IHC
Reactivity	Human

References (1)

Package

500 µl

Applications

Application Note

IHC-P: Use at a dilution of 1/200 for 10 minutes at RT. Staining of formalin-fixed tissues requires boiling tissue sections in 10mM citrate buffer, pH 6.0 for 10 minutes followed by cooling at RT for 20 minutes. Optimal dilutions/concentrations should be determined by the end user.

Properties

Form	Liquid
Buffer	PBS, 1% BSA
Preservative	0.09% Sodium azide
Storage	Store as concentrated solution. Centrifuge briefly prior to opening vial. Store at 4°C. DO NOT FREEZE.
Concentration	0.2 mg/ml (Please refer to the vial label for the specific concentration.)
Immunogen	Recombinant full length protein (Human).
Purification	Immunogen affinity purified
Conjugation	Unconjugated

Note

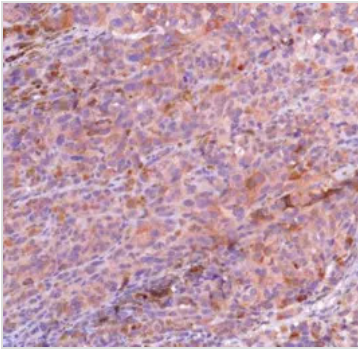
For laboratory research use only. Not for any clinical, therapeutic, or diagnostic use in humans or animals. Not for animal or human consumption.

Purchasers shall not, and agree not to enable third parties to, analyze, copy, reverse engineer or otherwise attempt to determine the structure or sequence of the product.

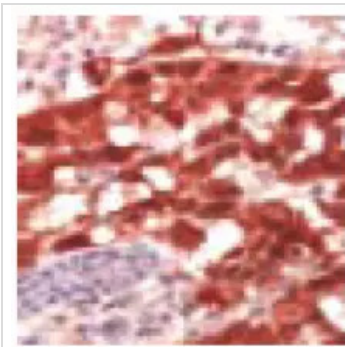
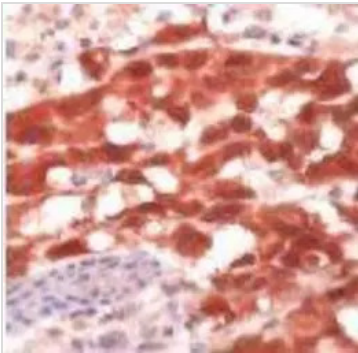


For full product information, images and publications, please visit our [website](#).

DATA IMAGES


GTX16031 IHC-P Image

Human Melanoma stained with anti-MAGE-1 antibody (GTX16031)


Melanoma stained with anti-MAGE-1
GTX16031 IHC Image

GTX16031 IHC Image

MAGE 1 antibody


For full product information, images and publications, please visit our [website](#).