

## Androgen Receptor antibody [3C6-F12-F11]

Cat. No. GTX16032

Host	Mouse
Clonality	Monoclonal
Isotype	IgG1
Applications	WB, ELISA
Reactivity	Human

Package  
100 µg

## Applications

## Application Note

Recommended Starting Dilutions: For ELISA: Use at a concentration of 12.5 ng/ml. For WB: Use at a dilution of 1:2,000. Optimal working dilutions should be determined experimentally by the end user.

Calculated MW	99 kDa. ( <a href="#">Note</a> )
Product Note	The Mouse anti-human AR antibody specifically detects targets derived from human recombinant protein at various concentrations. Cross reactivity with mouse and rat are expected from sequence similarity.

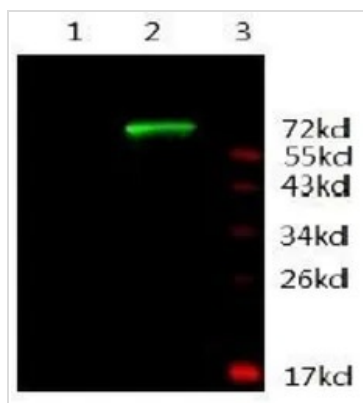
## Properties

Form	Liquid
Buffer	PBS
Preservative	No preservatives
Storage	Store as concentrated solution. Centrifuge briefly prior to opening vial. For short-term storage (1-2 weeks), store at 4°C. For long-term storage, aliquot and store at -20°C or below. Avoid multiple freeze-thaw cycles.
Concentration	1 mg/ml (Please refer to the vial label for the specific concentration.)
Immunogen	The immunogen corresponding to a region within amino acids 2 and 556 of human Androgen Receptor.
Purification	The IgG fraction of tissue culture supernatant was purified by Protein A/G affinity chromatography.
Conjugation	Unconjugated
Note	<p>For laboratory research use only. Not for any clinical, therapeutic, or diagnostic use in humans or animals. Not for animal or human consumption.</p> <p>Purchasers shall not, and agree not to enable third parties to, analyze, copy, reverse engineer or otherwise attempt to determine the structure or sequence of the product.</p>



For full product information, images and publications, please visit our [website](#).

## DATA IMAGES



### GTX16032 WB Image

WB analysis of (1) BSA, (2) recombinant protein AR and (3) protein marker using Androgen Receptor antibody [3C6-F12-F11] at a concentration of 0.5 µg/ml.



For full product information, images and publications, please visit our [website](#).