

Cytochrome C antibody [SJL2-4(apo)]

Cat. No. GTX16076

Host	Mouse
Clonality	Monoclonal
Isotype	IgG2b
Applications	WB
Reactivity	Human, Mouse, Rat, Goat, Sheep, Monkey

Package
50 µg

Applications

Application Note

WB: Use at a concentration of 1 µg/ml. Detects a band of approximately 12 kDa. Optimal dilutions/concentrations should be determined by the end user.

Calculated MW 12 kDa. ([Note](#))

Properties

Form	Liquid
Buffer	PBS
Preservative	0.02% Sodium azide
Storage	Store as concentrated solution. Centrifuge briefly prior to opening vial. For short-term storage (1-2 weeks), store at 4°C. For long-term storage, aliquot and store at -20°C or below. Avoid multiple freeze-thaw cycles.
Concentration	1 mg/ml (Please refer to the vial label for the specific concentration.)
Immunogen	Recombinant full length protein (Horse).
Purification	>95% by SDS-PAGE
Conjugation	Unconjugated

Note

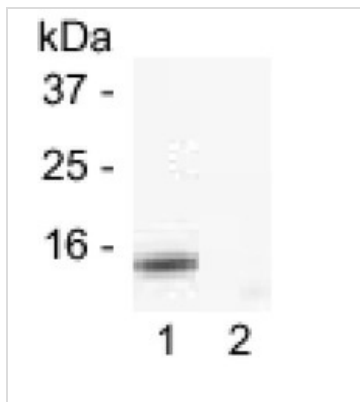
For laboratory research use only. Not for any clinical, therapeutic, or diagnostic use in humans or animals. Not for animal or human consumption.

Purchasers shall not, and agree not to enable third parties to, analyze, copy, reverse engineer or otherwise attempt to determine the structure or sequence of the product.



For full product information, images and publications, please visit our [website](#).

DATA IMAGES

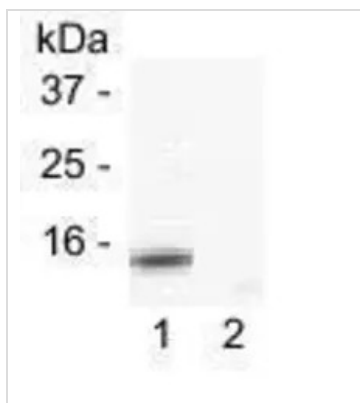


GTx16076 WB Image

Detection of cytochrome c in human cells. Cytochrome c migrates as a 13 kDa species

Lane 1: cytoplasmic fraction

Lane 2: nuclear fraction



GTx16076 WB Image

Detection of cytochrome c in human cells. Lane 1: cytoplasmic fraction, Lane 2: nuclear fraction. Cytochrome c migrates as a 13 kDa species.



For full product information, images and publications, please visit our [website](https://www.genetex.com).