

Clusterin antibody [CLI-9]

Cat. No. GTX16077

Host	Mouse
Clonality	Monoclonal
Isotype	IgG1
Applications	WB, ICC/IF, IHC-Fr, IP
Reactivity	Human

Package
50 µg

Applications

Application Note

ICC: Use at an assay dependent dilution. IHC-Fr: Use at an assay dependent dilution. IP: Use at an assay dependent dilution. WB: Use at a dilution of 1/2000. Predicted molecular weight: 54 kDa. Optimal dilutions/concentrations should be determined by the end user.

Calculated MW 52 kDa. ([Note](#))

Properties

Form	Liquid
Buffer	PBS
Preservative	0.02% Sodium azide
Storage	Store as concentrated solution. Centrifuge briefly prior to opening vial. For short-term storage (1-2 weeks), store at 4°C. For long-term storage, aliquot and store at -20°C or below. Avoid multiple freeze-thaw cycles.
Concentration	1 mg/ml (Please refer to the vial label for the specific concentration.)
Immunogen	Full length native protein (purified) (Human).
Purification	>95% by SDS-PAGE
Conjugation	Unconjugated

Note

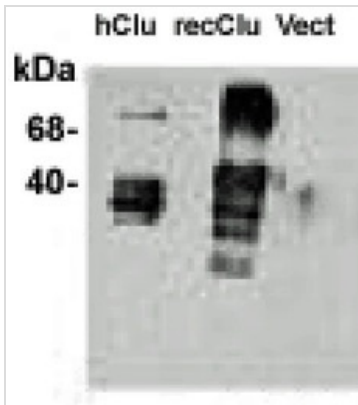
For laboratory research use only. Not for any clinical, therapeutic, or diagnostic use in humans or animals. Not for animal or human consumption.

Purchasers shall not, and agree not to enable third parties to, analyze, copy, reverse engineer or otherwise attempt to determine the structure or sequence of the product.



For full product information, images and publications, please visit our [website](#).

DATA IMAGES



GTX16077 WB Image

Detection of natural human clusterin in transfected HEK 293T cells with GTX16077



For full product information, images and publications, please visit our [website](#).