

Adiponectin antibody [Ne.Na]

Cat. No. GTX16086

Host	Mouse
Clonality	Monoclonal
Isotype	IgG1
Applications	WB, IP, ELISA
Reactivity	Human

Package
50 µg

Applications

Application Note

ELISA: Use at an assay dependent dilution. IP: Use at an assay dependent dilution. WB: Use at a concentration of 1 µg/ml. Predicted molecular weight: 29 kDa. Optimal dilutions/concentrations should be determined by the end user.

Calculated MW 26 kDa. ([Note](#))

Product Note Recognizes human ACRP30headless (tail of adiponectin). Does not cross-react with full length adiponectin.

Properties

Form	Liquid
Buffer	PBS
Preservative	0.02% Sodium azide
Storage	Store as concentrated solution. Centrifuge briefly prior to opening vial. For short-term storage (1-2 weeks), store at 4°C. For long-term storage, aliquot and store at -20°C or below. Avoid multiple freeze-thaw cycles.
Concentration	1 mg/ml (Please refer to the vial label for the specific concentration.)
Immunogen	Recombinant human ACRP30 headless (tail adiponectin) protein.
Purification	>95% by SDS-PAGE
Conjugation	Unconjugated

Note

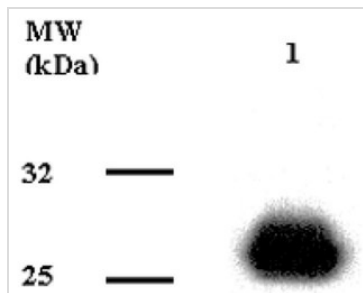
For laboratory research use only. Not for any clinical, therapeutic, or diagnostic use in humans or animals. Not for animal or human consumption.

Purchasers shall not, and agree not to enable third parties to, analyze, copy, reverse engineer or otherwise attempt to determine the structure or sequence of the product.



For full product information, images and publications, please visit our [website](#).

DATA IMAGES



GTX16086 WB Image

Monoclonal antibody to adiponectin (GTX16086) detects human ACRP30headless (tail of adiponectin) by Western blot



For full product information, images and publications, please visit our [website](#).