

BAFF antibody [Buffy XI]

Cat. No. GTX16087

Host	Mouse
Clonality	Monoclonal
Isotype	IgG1
Applications	WB
Reactivity	Human

Package
50 µg

Applications

Application Note

*Optimal dilutions/concentrations should be determined by the researcher.

Suggested dilution	Recommended dilution
WB	1 µg/mL

Not tested in other applications.

Calculated MW 31 kDa. ([Note](#))**Product Note** We do not recommend use of this product for Mouse samples.

Properties

Form	Liquid
Buffer	PBS
Preservative	0.02% Sodium azide
Storage	Store as concentrated solution. Centrifuge briefly prior to opening vial. Store at 4°C.
Concentration	Batch dependent (Please refer to the vial label for the specific concentration.)
Immunogen	BAFF (monoclonal Buffy-XI) antibody was raised against extracellular domain of human BAFF (aa. 137-285).
Purification	Purified IgG1
Conjugation	Unconjugated

Note

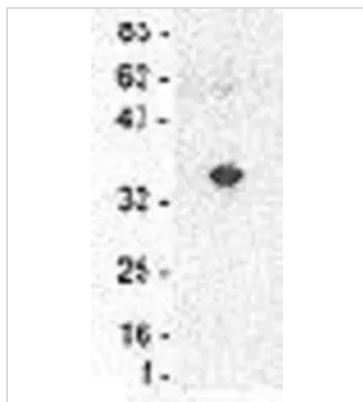
For laboratory research use only. Not for any clinical, therapeutic, or diagnostic use in humans or animals. Not for animal or human consumption.

Purchasers shall not, and agree not to enable third parties to, analyze, copy, reverse engineer or otherwise attempt to determine the structure or sequence of the product.



For full product information, images and publications, please visit our [website](#).

DATA IMAGES



GTX16087 WB Image



For full product information, images and publications, please visit our [website](#).