

# BAFF antibody [Buffy-1]

**Cat. No. GTX16107**

<b>Host</b>	Rat
<b>Clonality</b>	Monoclonal
<b>Isotype</b>	IgG2a
<b>Applications</b>	WB, ICC/IF, FCM
<b>Reactivity</b>	Human

**Package**  
50 µg

## Applications

### Application Note

\*Optimal dilutions/concentrations should be determined by the researcher.

Suggested dilution	Recommended dilution
WB	Assay dependent
ICC/IF	Assay dependent
FCM	Assay dependent

**Note : HEK 293T cells (5 x 10<sup>5</sup>) were mock transfected or transfected with BAFF.**

Not tested in other applications.

<b>Calculated MW</b>	31 kDa. ( <a href="#">Note</a> )
<b>Product Note</b>	Recognizes membrane-bound human BAFF. Detects endogenous protein by Flow Cytometry.

## Properties

<b>Form</b>	Liquid
<b>Buffer</b>	PBS
<b>Preservative</b>	0.02% Sodium azide
<b>Storage</b>	Store as concentrated solution. Centrifuge briefly prior to opening vial. Store at 4°C.
<b>Concentration</b>	Batch dependent (Please refer to the vial label for the specific concentration.)
<b>Immunogen</b>	BAFF (monoclonal Buffy-1) antibody was raised against recombinant human soluble BAFF (aa. 83-285).
<b>Purification</b>	Purified IgG2a
<b>Conjugation</b>	Unconjugated



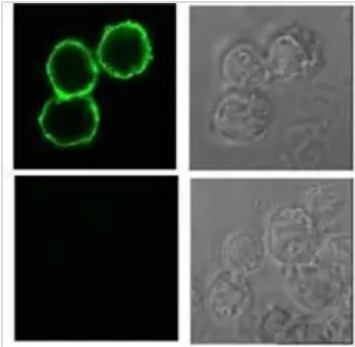
For full product information, images and publications, please visit our [website](#).

For laboratory research use only. Not for any clinical, therapeutic, or diagnostic use in humans or animals. Not for animal or human consumption.

**Note**

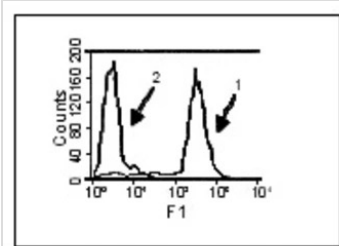
Purchasers shall not, and agree not to enable third parties to, analyze, copy, reverse engineer or otherwise attempt to determine the structure or sequence of the product.

#### DATA IMAGES



#### GTx16107 ICC/IF Image

BAFF antibody [Buffy-1]



#### GTx16107 FCM Image

It shows the flow cytometric profile of 293 cells stably transfected with a BAFF-expression plasmid (1). Control (2) are mock transfected 293 cells. Optimal concentration range is 0.5-5 µg/ml.



For full product information, images and publications, please visit our [website](#).