

basic Cytokeratin antibody [AE3]

Cat. No. GTX16111

Host	Mouse
Clonality	Monoclonal
Isotype	IgG1
Applications	WB, IHC-P, EM
Reactivity	Human

Package
100 µl

Applications

Application Note

Recommended Starting Dilutions:

For WB: Use at 1:1000-1:3000

Optimal dilutions should be determined experimentally by the researcher.

Product Note All basic (type II) human keratins K1, K2, K3, K4, K5, K6, K7, K8

Properties

Form	Liquid
Buffer	PBS
Preservative	0.1% Sodium azide
Storage	Store as concentrated solution. Centrifuge briefly prior to opening vial. For short-term storage (1-2 weeks), store at 4°C. For long-term storage, aliquot and store at -20°C or below. Avoid multiple freeze-thaw cycles.
Concentration	Batch dependent (Please refer to the vial label for the specific concentration.)
Immunogen	Human epidermal keratins
Purification	Protein G purified
Conjugation	Unconjugated

Note

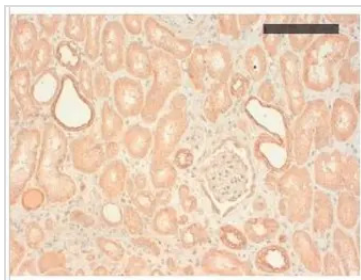
For laboratory research use only. Not for any clinical, therapeutic, or diagnostic use in humans or animals. Not for animal or human consumption.

Purchasers shall not, and agree not to enable third parties to, analyze, copy, reverse engineer or otherwise attempt to determine the structure or sequence of the product.



For full product information, images and publications, please visit our [website](#).

DATA IMAGES



GTX16111 IHC-P Image

Immunohistochemical analysis of paraffin embedded human kidney with cytokeratin type II antibody [AE3]



For full product information, images and publications, please visit our [website](#).