

Bax antibody [2D3]

Cat. No. GTX16119

Host	Mouse
Clonality	Monoclonal
Isotype	IgG1
Applications	WB
Reactivity	Human, Rat, Bovine, Cat, Dog

Package

50 µl

Applications

Application Note

WB: 1/10000. Predicted molecular weight: 21 kDa. Optimal dilutions/concentrations should be determined by the end user.

Calculated MW 21 kDa. ([Note](#))

Properties

Form	Liquid
Buffer	PBS
Preservative	0.08% Sodium azide
Storage	Store as concentrated solution. Centrifuge briefly prior to opening vial. For short-term storage (1-2 weeks), store at 4°C. For long-term storage, aliquot and store at -20°C or below. Avoid multiple freeze-thaw cycles.
Concentration	Batch dependent (Please refer to the vial label for the specific concentration.)
Immunogen	Synthetic peptide: MDGSGEQPRGGGPTSS, corresponding to amino acids 3-16 of Human Bax.
Conjugation	Unconjugated

Note

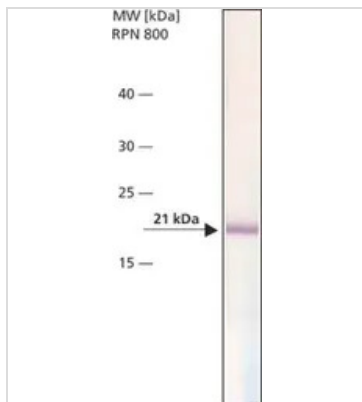
For laboratory research use only. Not for any clinical, therapeutic, or diagnostic use in humans or animals. Not for animal or human consumption.

Purchasers shall not, and agree not to enable third parties to, analyze, copy, reverse engineer or otherwise attempt to determine the structure or sequence of the product.



For full product information, images and publications, please visit our [website](#).

DATA IMAGES



GTx16119 WB Image

MCF-7 activated with 1 μ M Dexamethasone was separated on SDS-PAGE and probed with Monoclonal PA to BAX (MO) CL:2D2 (GTx16119). The antibody was developed with Alkaline Phosphatase APA Mouse Fab ads HlgG conjugate and an NBT/BCIP substrate. Antibody dilution 5 μ g/mL.



For full product information, images and publications, please visit our [website](https://www.genetex.com).