

VAV2 antibody

Cat. No. GTX16136

Host	Sheep
Clonality	Polyclonal
Isotype	IgG
Applications	WB, IP
Reactivity	Human

Package
250 µg

Applications

Application Note

IP: Use at an assay dependent dilution. WB: Use at a dilution of 1/5000. Predicted molecular weight: 101 kDa. Optimal dilutions/concentrations should be determined by the end user.

Calculated MW 101 kDa. ([Note](#))

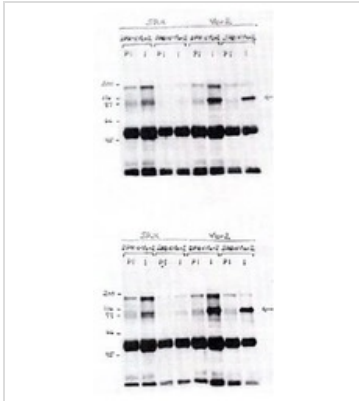
Properties

Form	Liquid
Buffer	PBS
Preservative	0.08% Sodium azide
Storage	Store as concentrated solution. Centrifuge briefly prior to opening vial. For short-term storage (1-2 weeks), store at 4°C. For long-term storage, aliquot and store at -20°C or below. Avoid multiple freeze-thaw cycles.
Concentration	Batch dependent (Please refer to the vial label for the specific concentration.)
Immunogen	His tagged fusion protein, corresponding to amino acids 287-578 of Human VAV2.
Purification	IgG fraction This antibody is provided as a 0.2 µm sterile filtered solution.
Conjugation	Unconjugated
Note	For laboratory research use only. Not for any clinical, therapeutic, or diagnostic use in humans or animals. Not for animal or human consumption. Purchasers shall not, and agree not to enable third parties to, analyze, copy, reverse engineer or otherwise attempt to determine the structure or sequence of the product.



For full product information, images and publications, please visit our [website](#).

DATA IMAGES



GTX16136 WB Image

HEK293 cells were transfected with either empty expression vector (pSR) or pSRa-Vav2 driving expression of human Vav2. Indicated antibodies (SHD or DPH) were used to immunoprecipitate Vav2 from 300ug protein lysates. Immunoprecipitated activity was identified by immunoblot of complexes using either DPH (upper gel) or SHD (lower gel) antisera at (1:10000). Immunoprecipitation of Endogenous/Exogenous Vav2 from HEK 283 (75 u g lysate per lane). Top gel - i.p. Ab: DPH or SHD preimmune serum (2.5 l/300 g lysate). DPH or SHD alpha Vav2 antiserum (2.5 l/300 g lysate). Western Blot Ab: DPH anti Vav2 1:10000. Bottom Gel - i.p. Ab DPH or SHD preimmune sera (2.5 l/300 g lysate). DPH or SHD anti Vav2 antisera (2.5 l/300 g lysate). Western blot Ab - SHD anti Vav2 antibody 1:10000.



For full product information, images and publications, please visit our [website](https://www.genetex.com).