

CHX10 antibody

Cat. No. GTX16142

Host	Sheep
Clonality	Polyclonal
Isotype	IgG
Applications	WB
Reactivity	Human, Mouse, Rat, Bovine

References (2)

Package

250 µg

Applications

Application Note

WB: Use at a concentration of 0.5 - 1 µg/ml. Detects a band of approximately 46 kDa in mouse and rat retinal tissue lysates. Optimal dilutions/concentrations should be determined by the end user.

Calculated MW 39 kDa. ([Note](#))

Properties

Form	Liquid
Buffer	PBS
Preservative	0.08% Sodium azide
Storage	Store as concentrated solution. Centrifuge briefly prior to opening vial. For short-term storage (1-2 weeks), store at 4°C. For long-term storage, aliquot and store at -20°C or below. Avoid multiple freeze-thaw cycles.
Concentration	1 mg/ml (Please refer to the vial label for the specific concentration.)
Immunogen	Recombinant fragment, corresponding to N terminal amino acids 1-131 of Human CHX10.
Purification	IgG fraction This antibody is provided as a 0.2 µm sterile filtered solution.
Conjugation	Unconjugated

Note

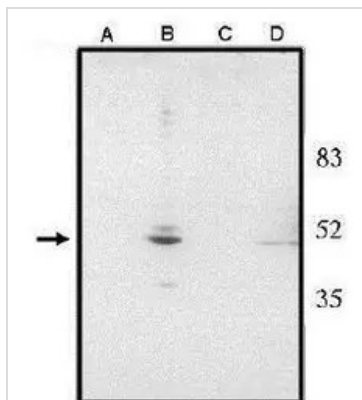
For laboratory research use only. Not for any clinical, therapeutic, or diagnostic use in humans or animals. Not for animal or human consumption.

Purchasers shall not, and agree not to enable third parties to, analyze, copy, reverse engineer or otherwise attempt to determine the structure or sequence of the product.



For full product information, images and publications, please visit our [website](#).

DATA IMAGES



GTX16142 WB Image

CHX10 antibody



For full product information, images and publications, please visit our [website](https://www.genetex.com).