

Calreticulin antibody

Cat. No. GTX16144

Host	Sheep
Clonality	Polyclonal
Isotype	IgG
Applications	WB, ICC/IF
Reactivity	Human, Mouse, Rat, Dog

Package
250 µg

Applications

Application Note

For IF: Use at a dilution of 1:50. For WB: Use at a dilution of 1:1,000 - 1:5,000. Predicted molecular weight: 48 kDa. Could be used as a marker for subcellular fractionation of cells. Optimal dilutions/concentrations should be determined by the end user.

Calculated MW 48 kDa. ([Note](#))

Properties

Form	Liquid
Buffer	PBS
Preservative	0.08% Sodium azide
Storage	Store as concentrated solution. Centrifuge briefly prior to opening vial. For short-term storage (1-2 weeks), store at 4°C. For long-term storage, aliquot and store at -20°C or below. Avoid multiple freeze-thaw cycles.
Concentration	1 mg/ml (Please refer to the vial label for the specific concentration.)
Immunogen	C-terminal domain of human calreticulin
Purification	IgG fraction From polyclonal serum
Conjugation	Unconjugated

Note

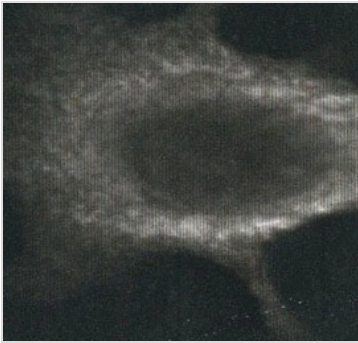
For laboratory research use only. Not for any clinical, therapeutic, or diagnostic use in humans or animals. Not for animal or human consumption.

Purchasers shall not, and agree not to enable third parties to, analyze, copy, reverse engineer or otherwise attempt to determine the structure or sequence of the product.



For full product information, images and publications, please visit our [website](#).

DATA IMAGES

**GTX16144 WB Image**

Western blot using antibody at 1:5000 dilution on indicated samples. Immunofluorescence of MCF-7 cells stained with antibody at 1:50 dilution.



For full product information, images and publications, please visit our [website](#).