

## SRPR alpha antibody

**Cat. No. GTX16145**

<b>Host</b>	Sheep
<b>Clonality</b>	Polyclonal
<b>Isotype</b>	IgG
<b>Applications</b>	WB, IP
<b>Reactivity</b>	Dog

**Package**  
250 µg

### Applications

#### Application Note

IP: Use at an assay dependent dilution. Can be used to immunoprecipitate both subunits of SRPR under non-denaturing conditions. WB: Use at a concentration of 1 - 5 µg/ml. Detects a band of approximately 72 kDa. Optimal dilutions/concentrations should be determined by the end user.

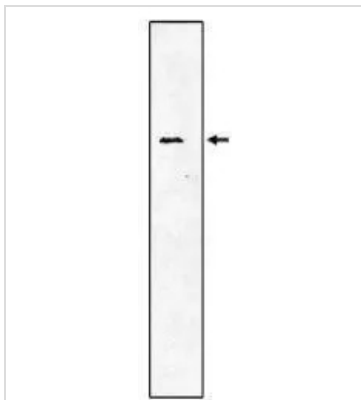
**Product Note** This antibody can immunoprecipitate both SRPR alpha and beta under non denaturing conditions.

### Properties

<b>Form</b>	Liquid
<b>Buffer</b>	PBS
<b>Preservative</b>	0.08% Sodium azide
<b>Storage</b>	Store as concentrated solution. Centrifuge briefly prior to opening vial. For short-term storage (1-2 weeks), store at 4°C. For long-term storage, aliquot and store at -20°C or below. Avoid multiple freeze-thaw cycles.
<b>Concentration</b>	1 mg/ml (Please refer to the vial label for the specific concentration.)
<b>Immunogen</b>	Recombinant fragment, corresponding to amino acids 39-295 of Dog SRPR alpha, which includes part of the amino terminal SRPR beta binding region and the hinge region between it and the carboxyl-terminal GTPase domain.
<b>Purification</b>	IgG fraction This antibody is provided as a 0.2 µm sterile filtered solution.
<b>Conjugation</b>	Unconjugated
<b>Note</b>	For laboratory research use only. Not for any clinical, therapeutic, or diagnostic use in humans or animals. Not for animal or human consumption.  Purchasers shall not, and agree not to enable third parties to, analyze, copy, reverse engineer or otherwise attempt to determine the structure or sequence of the product.



For full product information, images and publications, please visit our [website](#).

**DATA IMAGES**

**GTX16145 WB Image**

SRPR alpha antibody


 For full product information, images and publications, please visit our [website](#).