

SRPR beta antibody

Cat. No. GTX16146

Host	Sheep
Clonality	Polyclonal
Isotype	IgG
Applications	WB, IP
Reactivity	Dog

Package
250 µg

Applications

Application Note

IP: Use at an assay dependent dilution. WB: Use at a concentration of 1 - 5 µg/ml. Detects a band of approximately 30 kDa. Optimal dilutions/concentrations should be determined by the end user.

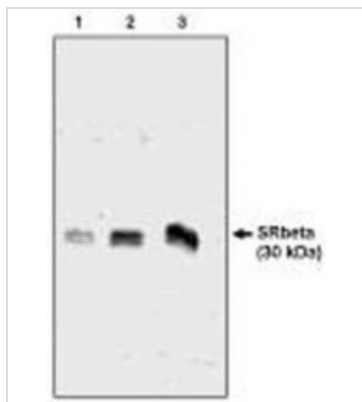
Properties

Form	Liquid
Buffer	PBS
Preservative	0.08% Sodium azide
Storage	Store as concentrated solution. Centrifuge briefly prior to opening vial. For short-term storage (1-2 weeks), store at 4°C. For long-term storage, aliquot and store at -20°C or below. Avoid multiple freeze-thaw cycles.
Concentration	1 mg/ml (Please refer to the vial label for the specific concentration.)
Immunogen	Synthetic peptide, corresponding to C terminal amino acids 246-265 of Dog SRPR beta.
Purification	Purified by ammonium sulfate precipitationThis antibody is provided as a 0.2 µm sterile filtered solution.
Conjugation	Unconjugated
Note	For laboratory research use only. Not for any clinical, therapeutic, or diagnostic use in humans or animals. Not for animal or human consumption. Purchasers shall not, and agree not to enable third parties to, analyze, copy, reverse engineer or otherwise attempt to determine the structure or sequence of the product.



For full product information, images and publications, please visit our [website](#).

DATA IMAGES



GTX16146 WB Image

Western blot analysis using SR antibody on 3 (1), 6 (2) and 12 (3) ng of canine microsomal protein



For full product information, images and publications, please visit our [website](#).