

SMC1 antibody [C2M]

Cat. No. GTX16147

Host	Mouse
Clonality	Monoclonal
Isotype	IgG
Applications	WB
Reactivity	Human

Package
100 µg

Applications

Application Note

WB: Use at a concentration of 1 - 5 µg/ml. Detects a band of approximately 166 kDa (predicted molecular weight: 143 kDa). Optimal dilutions/concentrations should be determined by the end user.

Properties

Form	Liquid
Buffer	PBS
Preservative	0.08% Sodium azide
Storage	Store as concentrated solution. Centrifuge briefly prior to opening vial. For short-term storage (1-2 weeks), store at 4°C. For long-term storage, aliquot and store at -20°C or below. Avoid multiple freeze-thaw cycles.
Concentration	1 mg/ml (Please refer to the vial label for the specific concentration.)
Immunogen	Recombinant fragment, corresponding to amino acids 402-894 of Human SMC1.
Purification	IgG fraction
Conjugation	Unconjugated

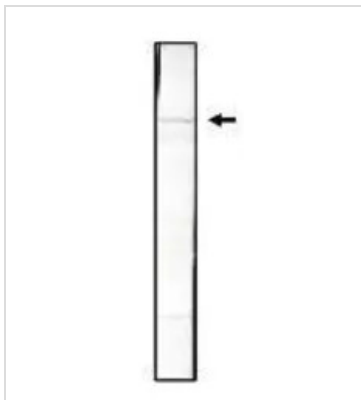
Note

For laboratory research use only. Not for any clinical, therapeutic, or diagnostic use in humans or animals. Not for animal or human consumption.

Purchasers shall not, and agree not to enable third parties to, analyze, copy, reverse engineer or otherwise attempt to determine the structure or sequence of the product.



For full product information, images and publications, please visit our [website](#).

DATA IMAGES

GTX16147 WB Image

SMC1 antibody [C2M]


 For full product information, images and publications, please visit our [website](#).