

Prostaglandin E Receptor EP2 antibody [3E6]

Cat. No. GTX16151

Host	Mouse
Clonality	Monoclonal
Isotype	IgG1
Applications	WB
Reactivity	Human, Rat

Package
50 µg

Applications

Application Note

For WB: Use at a concentration of 1-5 µg/ml. Optimal dilutions/concentrations should be determined by the researcher.

Calculated MW 40 kDa. ([Note](#))

Properties

Form	Liquid
Buffer	PBS
Preservative	0.08% Sodium azide
Storage	Store as concentrated solution. Centrifuge briefly prior to opening vial. For short-term storage (1-2 weeks), store at 4°C. For long-term storage, aliquot and store at -20°C or below. Avoid multiple freeze-thaw cycles.
Concentration	0.5 mg/ml (Please refer to the vial label for the specific concentration.)
Immunogen	Recombinant human Prostaglandin E Receptor EP2 protein.
Purification	IgG fraction
Conjugation	Unconjugated

Note

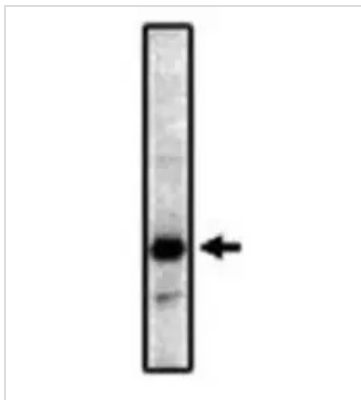
For laboratory research use only. Not for any clinical, therapeutic, or diagnostic use in humans or animals. Not for animal or human consumption.

Purchasers shall not, and agree not to enable third parties to, analyze, copy, reverse engineer or otherwise attempt to determine the structure or sequence of the product.



For full product information, images and publications, please visit our [website](#).

DATA IMAGES



GTX16151 WB Image

Prostaglandin E Receptor EP2 antibody [3E6]



For full product information, images and publications, please visit our [website](#).