

# PTGER3 antibody [5F5]

**Cat. No. GTX16152**

<b>Host</b>	Mouse
<b>Clonality</b>	Monoclonal
<b>Isotype</b>	IgG
<b>Applications</b>	WB
<b>Reactivity</b>	Human, Rat, Bovine

**Package**  
50 µg

## Applications

### Application Note

WB: Use at a concentration of 1 - 5 µg/ml. Predicted molecular weight: 43 kDa. Optimal dilutions/concentrations should be determined by the end user.

**Calculated MW** 43 kDa. ( [Note](#) )

## Properties

<b>Form</b>	Liquid
<b>Buffer</b>	PBS
<b>Preservative</b>	0.08% Sodium azide
<b>Storage</b>	Store as concentrated solution. Centrifuge briefly prior to opening vial. For short-term storage (1-2 weeks), store at 4°C. For long-term storage, aliquot and store at -20°C or below. Avoid multiple freeze-thaw cycles.
<b>Concentration</b>	1 mg/ml (Please refer to the vial label for the specific concentration.)
<b>Immunogen</b>	Recombinant Human Prostaglandin E Receptor EP3
<b>Purification</b>	IgG fraction
<b>Conjugation</b>	Unconjugated

### Note

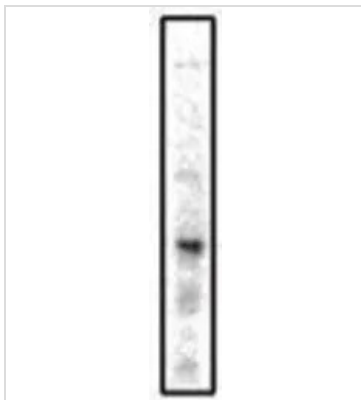
For laboratory research use only. Not for any clinical, therapeutic, or diagnostic use in humans or animals. Not for animal or human consumption.

Purchasers shall not, and agree not to enable third parties to, analyze, copy, reverse engineer or otherwise attempt to determine the structure or sequence of the product.



For full product information, images and publications, please visit our [website](#).

## DATA IMAGES



**GTX16152 WB Image**

Prostaglandin E Receptor EP3 antibody [5F5]



For full product information, images and publications, please visit our [website](#).