

RAB7A antibody [Rab7-117]

Cat. No. GTX16196

| | |
|-------------|---|
| Host | Mouse |
| Clonality | Monoclonal |
| Isotype | IgG2b |
| Application | WB, ICC/IF, IP, ELISA |
| Reactivity | Human, Mouse, Rat, Bovine, Dog, Chicken, Monkey |

Reference (2)

Package

100 µl

APPLICATION

Application Note

*Optimal dilutions/concentrations should be determined by the researcher.

| Suggested dilution | Recommended dilution |
|--------------------|----------------------|
| WB | 0.5-1 µg/ml |
| ICC/IF | Assay dependent |
| IP | Assay dependent |
| ELISA | Assay dependent |

Not tested in other applications.

| | |
|---------------|--|
| Calculated MW | 23 kDa. (Note) |
| Product Note | Monoclonal Anti-Rab7 recognizes human, monkey, bovine, rat, mouse, and chicken Rab7. |

PROPERTIES

| | |
|---------------|--|
| Form | Liquid |
| Buffer | PBS |
| Preservative | 15mM Sodium azide |
| Storage | Store as concentrated solution. Centrifuge briefly prior to opening vial. For short-term storage (1-2 weeks), store at 4°C. For long-term storage, aliquot and store at -20°C or below. Avoid multiple freeze-thaw cycles. |
| Concentration | ~2 mg/ml (Please refer to the vial label for the specific concentration.) |
| Immunogen | synthetic peptide corresponding to amino acids 163-177 of human Rab7. |
| Purification | Purified immunoglobulin |
| Conjugation | Unconjugated |



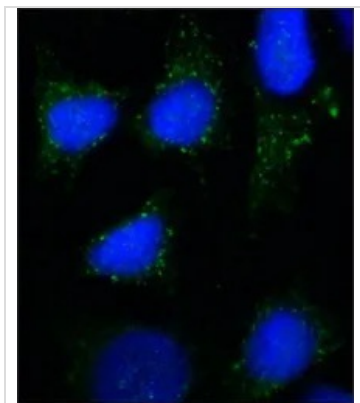
For full product information, images and publications, please visit our [website](#).

For laboratory research use only. Not for any clinical, therapeutic, or diagnostic use in humans or animals. Not for animal or human consumption.

Note

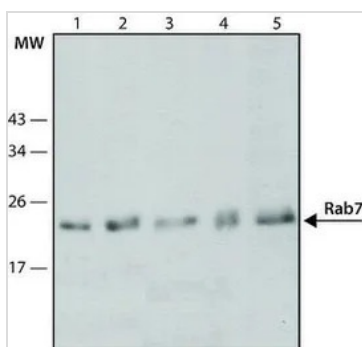
Purchasers shall not, and agree not to enable third parties to, analyze, copy, reverse engineer or otherwise attempt to determine the structure or sequence of the product.

DATA IMAGES



GTX16196 ICC/IF Image

ICC/IF analysis of HeLa cells using GTX16196 RAB7A antibody [Rab7-117] at 10 µg/mL (green). Cells were fixed and permeabilized with 4% PFA followed by 0.5% saponin.



GTX16196 WB Image

WB analysis of (1)HeLa (2) HepG2 (3) NRK (4)3T3 (5) MDCK cells using GTX16196 RAB7A antibody [Rab7-117] at 1 µg/mL.



For full product information, images and publications, please visit our [website](https://www.genetex.com).