

CGRP antibody

Cat. No. GTX16211

Host	Rabbit
Clonality	Polyclonal
Isotype	IgG
Applications	WB
Reactivity	Human, Mouse, Rat

References (2)

Package

100 µg

Applications

Application Note

*Optimal dilutions/concentrations should be determined by the researcher.

Suggested dilution	Recommended dilution
WB	1:200-1500

Not tested in other applications.

Properties

Form	Liquid
Buffer	PBS
Preservative	0.02% Sodium azide
Storage	Store as concentrated solution. Centrifuge briefly prior to opening vial. For short-term storage (1-2 weeks), store at 4°C. For long-term storage, aliquot and store at -20°C or below. Avoid multiple freeze-thaw cycles.
Concentration	0.5 mg/ml (Please refer to the vial label for the specific concentration.)
Immunogen	KLH conjugated synthetic peptide derived from human CGRP.
Purification	Purified by antigen-affinity chromatography
Conjugation	Unconjugated

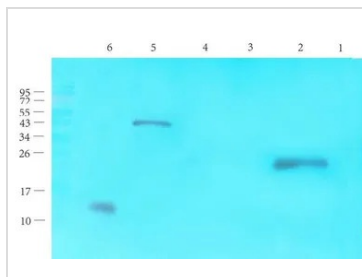
Note

For laboratory research use only. Not for any clinical, therapeutic, or diagnostic use in humans or animals. Not for animal or human consumption.

Purchasers shall not, and agree not to enable third parties to, analyze, copy, reverse engineer or otherwise attempt to determine the structure or sequence of the product.

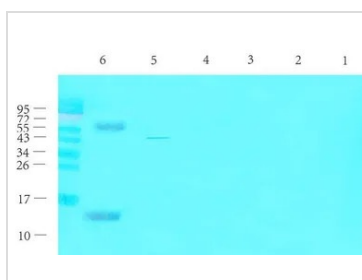


For full product information, images and publications, please visit our [website](#).

DATA IMAGES

GTX16211 WB Image

WB analysis of rat thyroid (Lane 1), rat liver (Lane 2), rat pancreas (Lane 3), mouse brain (Lane 4), mouse spinal cord (Lane 5), human thyroid cancer (Lane 6) lysates using GTX16211 CGRP antibody.

Dilution : 1µg/ml


GTX16211 WB Image

WB analysis of rat thyroid (Lane 1), rat liver (Lane 2), rat pancreas (Lane 3), mouse brain (Lane 4), mouse spinal cord (Lane 5), human thyroid cancer (Lane 6) tissue lysates using GTX16211 CGRP antibody.

Dilution : 1µg/ml



For full product information, images and publications, please visit our [website](https://www.genetex.com).