

# ARHGEF11 antibody

**Cat. No. GTX16242**

<b>Host</b>	Rabbit
<b>Clonality</b>	Polyclonal
<b>Isotype</b>	IgG
<b>Applications</b>	WB, IHC-P
<b>Reactivity</b>	Human, Mouse, Rat, Bovine, Dog, Chicken, Monkey, Chimpanzee, Horse

**Package**

50 µg

## Applications

### Application Note

\*Optimal dilutions/concentrations should be determined by the researcher.

Suggested dilution	Recommended dilution
WB	5 µg/mL
IHC-P	5 µg/mL

Not tested in other applications.

**Calculated MW** 168 kDa. ([Note](#))

**Product Note** A portion of amino acids 1-50 of human ARHGEF11.

## Properties

<b>Form</b>	Liquid
<b>Buffer</b>	PBS, 0.2% Gelatin
<b>Preservative</b>	0.05% Sodium azide
<b>Storage</b>	Store as concentrated solution. Centrifuge briefly prior to opening vial. For short-term storage (1-2 weeks), store at 4°C. For long-term storage, aliquot and store at -20°C or below. Avoid multiple freeze-thaw cycles.
<b>Concentration</b>	Batch dependent (Please refer to the vial label for the specific concentration.)
<b>Immunogen</b>	A portion of amino acids 1-50 of human ARHGEF11.
<b>Purification</b>	Purified by affinity chromatography
<b>Conjugation</b>	Unconjugated

### Note

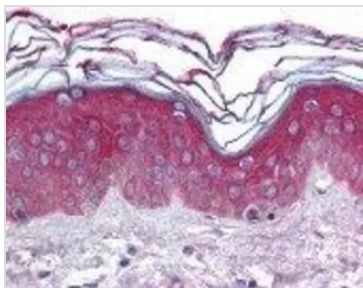
For laboratory research use only. Not for any clinical, therapeutic, or diagnostic use in humans or animals. Not for animal or human consumption.

Purchasers shall not, and agree not to enable third parties to, analyze, copy, reverse engineer or otherwise attempt to determine the structure or sequence of the product.



For full product information, images and publications, please visit our [website](#).

## DATA IMAGES



### GTX16242 IHC-P Image

IHC-P analysis of human skin tissue using GTX16242 ARHGEF11 antibody.



For full product information, images and publications, please visit our [website](#).