

Tubulin (Acetyl Lys40) antibody [6-11B-1]

Cat. No. GTX16292

Host	Mouse
Clonality	Monoclonal
Isotype	IgG2b
Applications	WB, ICC/IF, IHC-Wm, Dot, ELISA, EM, RIA
Reactivity	Human, Mouse, Rat, Zebrafish, Bovine, Dog, Hamster, Chicken, Pig, Monkey, Frog

References (8)

Package

100 µl

Applications

Application Note

*Optimal dilutions/concentrations should be determined by the researcher.

Suggested dilution	Recommended dilution
WB	1:2,000
ICC/IF	Assay dependent
IHC-Wm	Assay dependent
Dot	Assay dependent
ELISA	Assay dependent
EM	Assay dependent
RIA	Assay dependent

Not tested in other applications.

Calculated MW 50 kDa. ([Note](#))

Product Note

The antibody recognizes an epitope located on the $\alpha 3$ isoform of Chlamydomonas axonemal α -tubulin, within four residues of Lys-40 when this amino acid is acetylated. A sequence very similar to the one detected by the antibody in Chlamydomonas is found in the majority of α -tubulins, but the corresponding region is markedly divergent in some α -tubulin isoforms from chicken, Drosophila and yeast. The antibody has been used to detect acetylated α -tubulins in several organisms. Occasionally, the epitope recognized by the antibody may be absent or masked as it is in the kangaroo rat epithelial-like cell line PtK2.

Properties

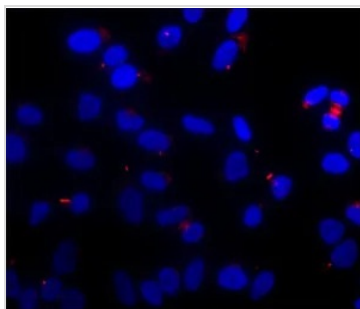
Form	Liquid
Buffer	Ascites
Preservative	15mM Sodium azide
Storage	Store as concentrated solution. Centrifuge briefly prior to opening vial. For short-term storage (1-2 weeks), store at 4°C. For long-term storage, aliquot and store at -20°C or below. Avoid multiple freeze-thaw cycles.



For full product information, images and publications, please visit our [website](#).

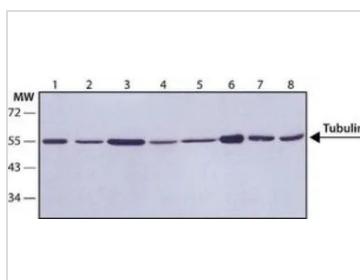
Immunogen	acetylated α -tubulin from the outer arm of sea urchin sperm axonemes.
Purification	Unpurified
Conjugation	Unconjugated
Note	For laboratory research use only. Not for any clinical, therapeutic, or diagnostic use in humans or animals. Not for animal or human consumption. Purchasers shall not, and agree not to enable third parties to, analyze, copy, reverse engineer or otherwise attempt to determine the structure or sequence of the product.

DATA IMAGES



GTX16292 ICC/IF Image

ICC/IF analysis of HeLa cells using GTX16292 Tubulin (Acetyl Lys40) antibody [6-11B-1] at 1:2000 (red) with DAPI(blue). Cells were fixed and permeabilized with 4% paraformaldehyde followed by 0.5% Triton™ X-100.



GTX16292 WB Image

WB analysis of (1)HeLa (2) U87 (3) COS7 (4) P19 (5) rat2 (6) CHO (7) MDBK (8) MDCK cells using GTX16292 Tubulin (Acetyl Lys40) antibody [6-11B-1] at 1:2,000.



For full product information, images and publications, please visit our [website](#).