

## LST1 antibody [LST1/02]

Cat. No. GTX16300

<b>Host</b>	Mouse
<b>Clonality</b>	Monoclonal
<b>Isotype</b>	IgG1
<b>Applications</b>	WB, ICC/IF, IP
<b>Reactivity</b>	Human

Package  
100 µg

## Applications

## Application Note

\*Optimal dilutions/concentrations should be determined by the researcher.

Suggested dilution	Recommended dilution
WB	Assay dependent
ICC/IF	Assay dependent
IP	Assay dependent

Not tested in other applications.

<b>Calculated MW</b>	11 kDa. ( <a href="#">Note</a> )
<b>Product Note</b>	This antibody reacts with an extracellular epitope of LST1.

## Properties

<b>Form</b>	Liquid
<b>Buffer</b>	PBS
<b>Preservative</b>	15mM Sodium azide
<b>Storage</b>	Store as concentrated solution. Centrifuge briefly prior to opening vial. Store at 4°C. DO NOT FREEZE.
<b>Concentration</b>	1 mg/ml (Please refer to the vial label for the specific concentration.)
<b>Immunogen</b>	KLH-fused peptide corresponding to amino acids SSEGPDLRGRDKRGT of human LST1
<b>Purification</b>	Protein A purified
<b>Conjugation</b>	Unconjugated

## Note

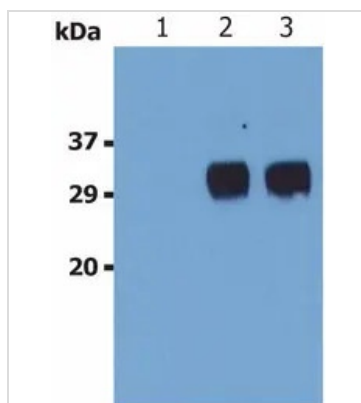
For laboratory research use only. Not for any clinical, therapeutic, or diagnostic use in humans or animals. Not for animal or human consumption.

Purchasers shall not, and agree not to enable third parties to, analyze, copy, reverse engineer or otherwise attempt to determine the structure or sequence of the product.



For full product information, images and publications, please visit our [website](#).

## DATA IMAGES



### GTX16300 WB Image

WB analysis of U937 cell lysate (non-reducing) using GTX16300 LST1 antibody [LST1/02].

Lane 1 : mouse IgG1 isotype control

Lane 2-3 : GTX16300



For full product information, images and publications, please visit our [website](https://www.genetex.com).