

LEMD1 antibody

Cat. No. GTX16303

Host	Rabbit
Clonality	Polyclonal
Isotype	IgG
Applications	WB, ELISA
Reactivity	Human, Mouse

References (1)

Package

100 µg

Applications

Application Note

*Optimal dilutions/concentrations should be determined by the researcher.

Suggested dilution	Recommended dilution
WB	1 µg/mL
ELISA	Assay dependent

Not tested in other applications.

Calculated MW 20 kDa. ([Note](#))

Product Note At least six isoforms of LEMD1 are known to exist; this antibody will detect the longest isoform. LEMD1 antibody is predicted to not cross-react with LEMD2 and LEMD3.

Properties

Form	Liquid
Buffer	PBS
Preservative	0.02% Sodium azide
Storage	Store as concentrated solution. Centrifuge briefly prior to opening vial. For short-term storage (1-2 weeks), store at 4°C. For long-term storage, aliquot and store at -20°C or below. Avoid multiple freeze-thaw cycles.
Concentration	1 mg/ml (Please refer to the vial label for the specific concentration.)
Immunogen	LEMD1 antibody was raised against a 19 amino acid synthetic peptide near the center of human LEMD1. The immunogen is located within amino acids 90 - 140 of LEMD1.
Purification	Purified by antigen-affinity chromatography
Conjugation	Unconjugated



For full product information, images and publications, please visit our [website](#).

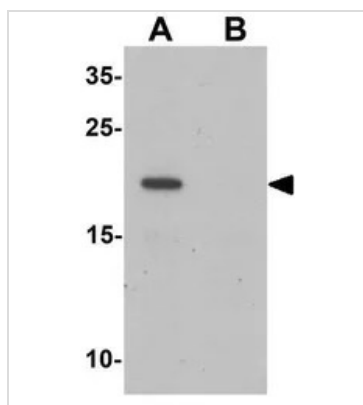
Date 2026 / 01 / 08 Page 1 of 2

For laboratory research use only. Not for any clinical, therapeutic, or diagnostic use in humans or animals. Not for animal or human consumption.

Note

Purchasers shall not, and agree not to enable third parties to, analyze, copy, reverse engineer or otherwise attempt to determine the structure or sequence of the product.

DATA IMAGES



GTX16303 WB Image

WB analysis of A-20 cell lysate in (A) the absence and (B) the presence of blocking peptide using GTX16303 LEMD1 antibody.

Working concentration : 1 µg/ml



For full product information, images and publications, please visit our [website](#).