

# MS4A6A antibody

**Cat. No. GTX16310**

<b>Host</b>	Rabbit
<b>Clonality</b>	Polyclonal
<b>Isotype</b>	IgG
<b>Applications</b>	WB, IHC-P, ELISA
<b>Reactivity</b>	Human, Mouse, Rat

**Package**  
100 µg

## Applications

### Application Note

\*Optimal dilutions/concentrations should be determined by the researcher.

Suggested dilution	Recommended dilution
WB	1 - 2 µg/mL
IHC-P	2.5 µg/mL
ELISA	Assay dependent

Not tested in other applications.

**Calculated MW** 27 kDa. ( [Note](#) )

**Product Note** At least three isoforms of MS4A6A are known to exist; this antibody will detect the two longer isoforms. MS4A6A antibody is predicted to not cross-react with MS4A family members.

## Properties

<b>Form</b>	Liquid
<b>Buffer</b>	PBS
<b>Preservative</b>	0.02% Sodium azide
<b>Storage</b>	Store as concentrated solution. Centrifuge briefly prior to opening vial. For short-term storage (1-2 weeks), store at 4°C. For long-term storage, aliquot and store at -20°C or below. Avoid multiple freeze-thaw cycles.
<b>Concentration</b>	1 mg/ml (Please refer to the vial label for the specific concentration.)
<b>Immunogen</b>	MS4A6A antibody was raised against a 19 amino acid synthetic peptide near the amino terminus of human MS4A6A. The immunogen is located within the first 50 amino acids of MS4A6A.
<b>Purification</b>	Purified by antigen-affinity chromatography
<b>Conjugation</b>	Unconjugated



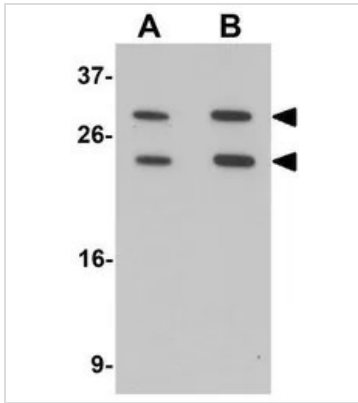
For full product information, images and publications, please visit our [website](#).

For laboratory research use only. Not for any clinical, therapeutic, or diagnostic use in humans or animals. Not for animal or human consumption.

**Note**

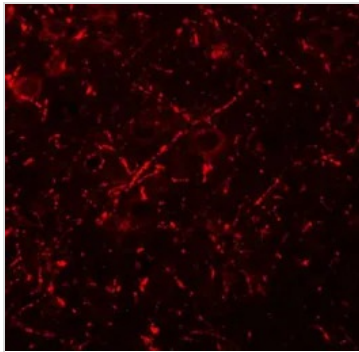
Purchasers shall not, and agree not to enable third parties to, analyze, copy, reverse engineer or otherwise attempt to determine the structure or sequence of the product.

## DATA IMAGES



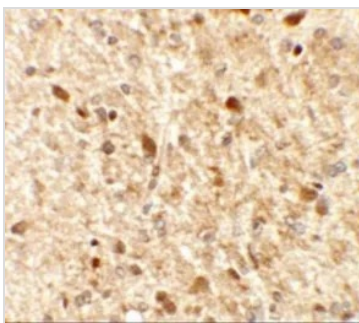
### GTX16310 WB Image

WB analysis of 293 cell lysate using GTX16310 MS4A6A antibody.  
Working concentration : (A) 1 and (B) 2  $\mu$ g/ml



### GTX16310 IHC-P Image

IHC-P analysis of rat brain tissue using GTX16310 MS4A6A antibody.  
Working concentration : 20  $\mu$ g/ml



### GTX16310 IHC-P Image

IHC-P analysis of rat brain tissue using GTX16310 MS4A6A antibody.  
Working concentration : 2.5  $\mu$ g/ml



For full product information, images and publications, please visit our [website](https://www.genetex.com).