

## GCLC antibody, N-term

Cat. No. GTX16315

Host	Rabbit
Clonality	Polyclonal
Isotype	IgG
Applications	WB, IHC-P
Reactivity	Human, Mouse

References ( 18 )

Package

50 µg

## Applications

## Application Note

\*Optimal dilutions/concentrations should be determined by the researcher.

Suggested dilution	Recommended dilution
WB	0.2-2.5 ug/ml
IHC-P	2-10 ug/ml

Not tested in other applications.

Calculated MW 73 kDa. ( [Note](#) )

## Properties

Form	Liquid
Buffer	PBS, 2% Sucrose
Preservative	0.09% Sodium azide
Storage	Store as concentrated solution. Centrifuge briefly prior to opening vial. For short-term storage (1-2 weeks), store at 4°C. For long-term storage, aliquot and store at -20°C or below. Avoid multiple freeze-thaw cycles.
Concentration	0.5-1 mg/ml (Please refer to the vial label for the specific concentration.)
Immunogen	A synthetic peptide corresponding to a N-terminal region of Human GCLC
Purification	Affinity Purified
Conjugation	Unconjugated

## Note

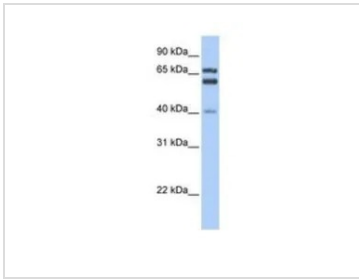
For laboratory research use only. Not for any clinical, therapeutic, or diagnostic use in humans or animals. Not for animal or human consumption.

Purchasers shall not, and agree not to enable third parties to, analyze, copy, reverse engineer or otherwise attempt to determine the structure or sequence of the product.



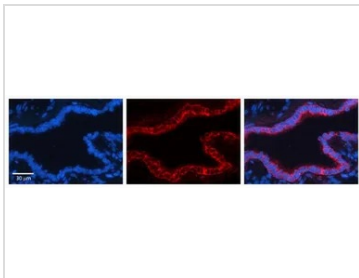
For full product information, images and publications, please visit our [website](#).

## DATA IMAGES



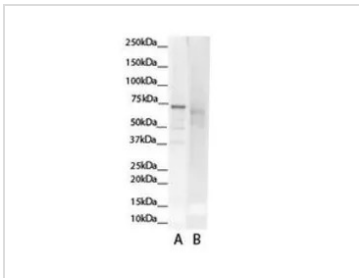
### GTX16315 WB Image

WB analysis of human fetal liver tissue using GTX16315 GCLC antibody at 0.2-1µg/ml.



### GTX16315 IHC-P Image

IHC-P analysis of human bronchial epithelial tissue using GTX16315 GCLC antibody at 1:600. Left to right : DAPI, GCLC, Merge. Low pH, heat-induced antigen retrieval method utilizing Sodium Citrate buffer.



### GTX16315 WB Image

WB analysis of human liver tissue using GTX16315 GCLC antibody at 1:1000.

Lane A : Primary antibody

Lane B : Primary antibody + Blocking peptide



For full product information, images and publications, please visit our [website](https://www.genetex.com).