

## Glucocorticoid Receptor alpha antibody

**Cat. No. GTX16318**

|                     |  |
|---------------------|--|
| <b>Host</b>         | Rabbit   |
| <b>Clonality</b>    | Polyclonal   |
| <b>Isotype</b>      | IgG  |
| <b>Applications</b> | WB, ICC/IF, IHC-P, FCM, IP, ChIP assay, Gel supershift assays, IHC |
| <b>Reactivity</b>   | Human, Mouse, Rat, Sheep   |

**Package**  
50 µg

## Applications

**Application Note**

\*Optimal dilutions/concentrations should be determined by the researcher.

| Suggested dilution    | Recommended dilution |
|-----------------------|----------------------|
| WB                    | 4 µg/ml              |
| ICC/IF                | 1:100-1:200          |
| IHC-P                 | 1:20                 |
| FCM                   | Assay dependent      |
| IP                    | Assay dependent      |
| ChIP assay            | Assay dependent      |
| Gel supershift assays | Assay dependent      |
| IHC                   | Assay dependent      |

Not tested in other applications.

**Calculated MW** 86 kDa. ([Note](#))

**Product Note** This antibody does not detect GR beta.

## Properties

|                      |  |
|----------------------|--|
| <b>Form</b>          | Liquid   |
| <b>Buffer</b>        | PBS  |
| <b>Preservative</b>  | 0.05% Sodium azide   |
| <b>Storage</b>       | Store as concentrated solution. Centrifuge briefly prior to opening vial. For short-term storage (1-2 weeks), store at 4°C. For long-term storage, aliquot and store at -20°C or below. Avoid multiple freeze-thaw cycles. |
| <b>Concentration</b> | 1 mg/ml (Please refer to the vial label for the specific concentration.)   |
| <b>Immunogen</b>     | Synthetic Peptide: C(755) E I I T N Q I P K Y S N G N I K K(771)   |



For full product information, images and publications, please visit our [website](#).

**Purification** Purified by antigen-affinity chromatography

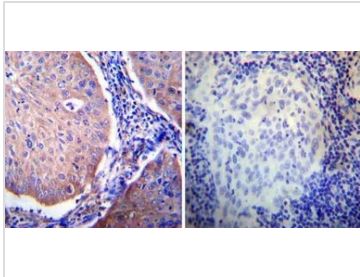
**Conjugation** Unconjugated

**Note**

For laboratory research use only. Not for any clinical, therapeutic, or diagnostic use in humans or animals. Not for animal or human consumption.

Purchasers shall not, and agree not to enable third parties to, analyze, copy, reverse engineer or otherwise attempt to determine the structure or sequence of the product.

DATA IMAGES



**GTX16318 IHC-P Image**

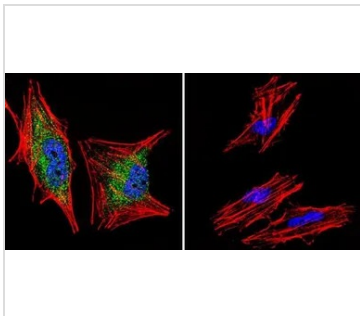
IHC-P analysis of human cervical carcinoma tissue using GTX16318 Glucocorticoid Receptor alpha antibody.

Left : Primary antibody

Right : Negative control without primary antibody

Antigen retrieval : heat induced antigen retrieval was performed using 10mM sodium citrate (pH6.0) buffer, microwaved for 8-15 minutes

Dilution : 1:20



**GTX16318 ICC/IF Image**

ICC/IF analysis of A2058 Cells using GTX16318 Glucocorticoid Receptor alpha antibody. Cells were probed without (right) or with(left) an antibody.

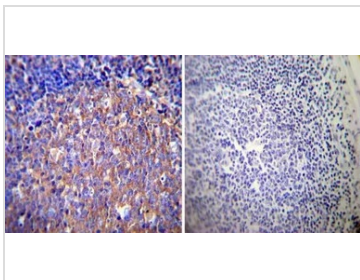
Green : Primary antibody

Blue : Nuclei

Red : Actin

Fixation : formaldehyde

Dilution : 1:200 overnight at 4°C



**GTX16318 IHC-P Image**

IHC-P analysis of human tonsil tissue using GTX16318 Glucocorticoid Receptor alpha antibody.

Left : Primary antibody

Right : Negative control without primary antibody

Antigen retrieval : heat induced antigen retrieval was performed using 10mM sodium citrate (pH6.0) buffer, microwaved for 8-15 minutes

Dilution : 1:50



For full product information, images and publications, please visit our [website](#).