

# Glucocorticoid Receptor beta antibody

**Cat. No. GTX16319**

<b>Host</b>	Rabbit
<b>Clonality</b>	Polyclonal
<b>Isotype</b>	IgG
<b>Application</b>	WB, ICC/IF, FACS, IP, Gel supershift assays, IHC
<b>Reactivity</b>	Human, Sheep, Pig

Reference ( 1 )  
Package  
50 µl

## APPLICATION

### Application Note

\*Optimal dilutions/concentrations should be determined by the researcher.

Suggested dilution	Recommended dilution
WB	1:500
ICC/IF	1:1,500
FACS	Assay dependent
IP	Assay dependent
Gel supershift assays	Assay dependent
IHC	Assay dependent

Not tested in other applications.

**Calculated MW** 86 kDa. ( [Note](#) )

## PROPERTIES

<b>Form</b>	Liquid
<b>Buffer</b>	Serum diluted with PBS
<b>Preservative</b>	0.05% Sodium azide
<b>Storage</b>	Store as concentrated solution. Centrifuge briefly prior to opening vial. For short-term storage (1-2 weeks), store at 4°C. For long-term storage, aliquot and store at -20°C or below. Avoid multiple freeze-thaw cycles.
<b>Immunogen</b>	Synthetic Peptide: N(728) V M W L K P E S T S H T L I(742) C
<b>Purification</b>	Unpurified
<b>Conjugation</b>	Unconjugated



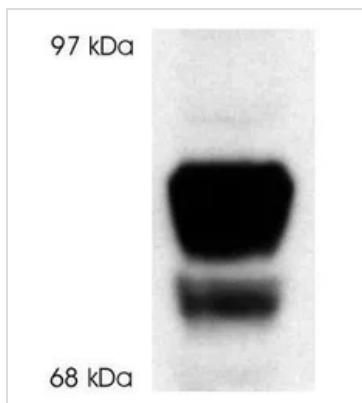
For full product information, images and publications, please visit our [website](#).

For laboratory research use only. Not for any clinical, therapeutic, or diagnostic use in humans or animals. Not for animal or human consumption.

**Note**

Purchasers shall not, and agree not to enable third parties to, analyze, copy, reverse engineer or otherwise attempt to determine the structure or sequence of the product.

#### DATA IMAGES



#### GTX16319 WB Image

WB analysis of hGR beta transfected COS-74 whole cell extract using GTX16319 Glucocorticoid Receptor beta antibody.



For full product information, images and publications, please visit our [website](#).