

TGF beta 2 antibody [220ct16.4.3.1]

Cat. No. GTX16335

Host	Mouse
Clonality	Monoclonal
Isotype	IgG1
Applications	WB, ICC/IF, IHC-P
Reactivity	Human

Package
400 µl

Applications

Application Note

*Optimal dilutions/concentrations should be determined by the researcher.

Suggested dilution	Recommended dilution
WB	1:100-1:1000
ICC/IF	1:10-1:50
IHC-P	1:10-1:50

Not tested in other applications.

Calculated MW 48 kDa. ([Note](#))

Properties

Form	Liquid
Buffer	PBS
Preservative	0.09% Sodium azide
Storage	Store as concentrated solution. Centrifuge briefly prior to opening vial. For short-term storage (1-2 weeks), store at 4°C. For long-term storage, aliquot and store at -20°C or below. Avoid multiple freeze-thaw cycles.
Concentration	Batch dependent (Please refer to the vial label for the specific concentration.)
Immunogen	This antibody is generated from mouse immunized with TGFβ2 recombinant protein.
Purification	Protein G purified, followed by dialysis against PBS.
Conjugation	Unconjugated

Note

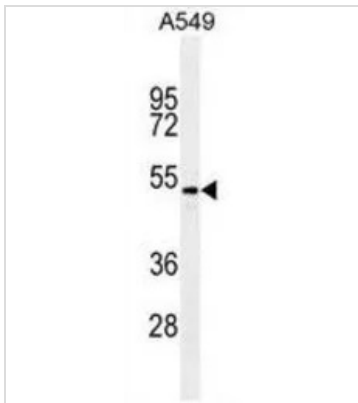
For laboratory research use only. Not for any clinical, therapeutic, or diagnostic use in humans or animals. Not for animal or human consumption.

Purchasers shall not, and agree not to enable third parties to, analyze, copy, reverse engineer or otherwise attempt to determine the structure or sequence of the product.



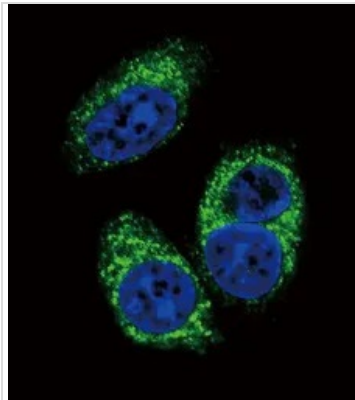
For full product information, images and publications, please visit our [website](#).

DATA IMAGES



GTX16335 WB Image

WB analysis of A549 cell lysate (35µg/lane) using GTX16335 TGF beta 2 antibody [220ct16.4.3.1].

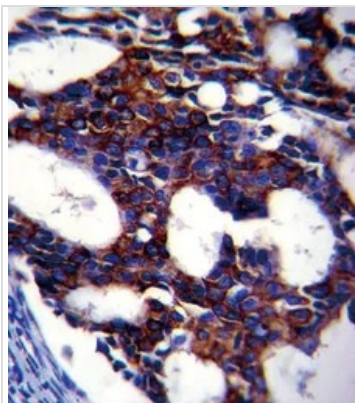


GTX16335 ICC/IF Image

ICC/IF analysis of A549 cells using GTX16335 TGF beta 2 antibody [220ct16.4.3.1].

Green : TGF beta 2

Blue : DAPI



GTX16335 IHC-P Image

IHC-P analysis of human breast carcinoma using GTX16335 TGF beta 2 antibody [220ct16.4.3.1].



For full product information, images and publications, please visit our [website](https://www.genetex.com).