

# Trident Total Protein Extraction Kit

**Cat. No. GTX16372**
**Applications** IP, ELISA, Immunoblotting

**Package**  
20 test, 5 test

## Applications

### Application Note

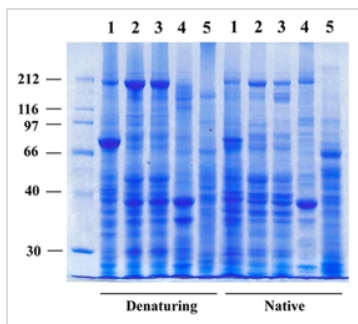
The use of protease inhibitors is not necessary prior to extraction. However if downstream application takes significant amounts of time or the protein extract will be stored for longer period of time, addition of protease inhibitors to lysis buffer is recommended.

## Properties

**Storage** Store Native Lysis Buffer at 4°C and store Denaturing Lysis Buffer at room temperature.

**Note** For *In vitro* laboratory use only. Not for any clinical, therapeutic, or diagnostic use in humans or animals. Not for animal or human consumption. Spin column-based protein extraction and cell fractionation technologies were developed by Invent Biotechnologies, Inc.

## DATA IMAGES


**GTX16372 Image**


For full product information, images and publications, please visit our [website](https://www.genetex.com).