

ALK (phospho Tyr1604) antibody

Cat. No. GTX16377

Host	Rabbit
Clonality	Polyclonal
Isotype	IgG
Applications	WB, ICC/IF, IHC-P, IHC-Fr
Reactivity	Human, Monkey

References (1)

Package

100 µl

Applications

Application Note

*Optimal dilutions/concentrations should be determined by the researcher.

Suggested dilution	Recommended dilution
WB	1:500-1:3000
ICC/IF	1:100-1:500
IHC-P	1:50-1:100
IHC-Fr	Assay dependent

Not tested in other applications.

Calculated MW 176 kDa. ([Note](#))

Properties

Form	Liquid
Buffer	PBS, 150mM NaCl, 50% Glycerol
Preservative	0.02% Sodium azide
Storage	Store as concentrated solution. Centrifuge briefly prior to opening vial. For short-term storage (1-2 weeks), store at 4°C. For long-term storage, aliquot and store at -20°C or below. Avoid multiple freeze-thaw cycles.
Concentration	1 mg/ml (Please refer to the vial label for the specific concentration.)
Immunogen	Peptide sequence around phosphorylation site of tyrosine 1604 (G-H-Y(p)-E-D) derived from human ALK.
Purification	Purified by antigen-affinity chromatography. Non-phospho specific antibodies were removed by chromatography using non-phosphopeptide.
Conjugation	Unconjugated

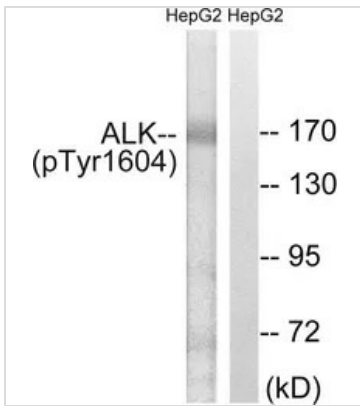


For full product information, images and publications, please visit our [website](#).

For laboratory research use only. Not for any clinical, therapeutic, or diagnostic use in humans or animals. Not for animal or human consumption.

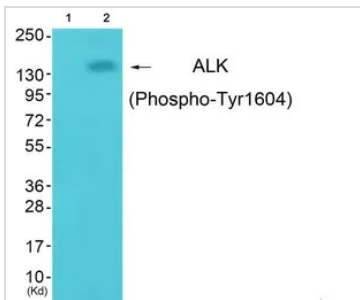
Note
 Purchasers shall not, and agree not to enable third parties to, analyze, copy, reverse engineer or otherwise attempt to determine the structure or sequence of the product.

DATA IMAGES



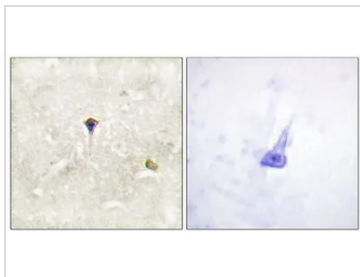
GTX16377 WB Image

WB analysis of extracts from HepG2 cells using GTX16377 ALK (phospho Tyr1604) antibody.
 Left : Primary antibody
 Right : Primary antibody pre-incubated with the antigen specific peptide



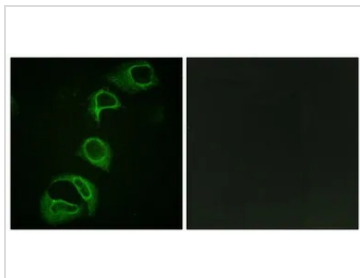
GTX16377 WB Image

WB analysis of extracts from COS-7 cells (lane 2) using GTX16377 ALK (phospho Tyr1604) antibody.
 Left : Primary antibody pre-incubated with the antigen specific peptide
 Right : Primary antibody



GTX16377 IHC-P Image

IHC-P analysis of human brain tissue using GTX16377 ALK (phospho Tyr1604) antibody.
 Left : Primary antibody
 Right : Primary antibody pre-incubated with the antigen specific peptide



GTX16377 ICC/IF Image

ICC/IF analysis of HeLa cells using GTX16377 ALK (phospho Tyr1604) antibody.
 Left : Primary antibody
 Right : Primary antibody pre-incubated with the antigen specific peptide



For full product information, images and publications, please visit our [website](#).