

# Tapasin antibody

**Cat. No. GTX16401**

|                     |                   |
|---------------------|-------------------|
| <b>Host</b>         | Rabbit            |
| <b>Clonality</b>    | Polyclonal        |
| <b>Isotype</b>      | IgG               |
| <b>Applications</b> | WB, IHC-P         |
| <b>Reactivity</b>   | Human, Mouse, Rat |

**Package**  
100 µl

## Applications

### Application Note

\*Optimal dilutions/concentrations should be determined by the researcher.

| Suggested dilution | Recommended dilution |
|--------------------|----------------------|
| WB                 | 1:500 - 1:2000       |
| IHC-P              | 1:50 - 1:100         |

Not tested in other applications.

**Calculated MW** 48 kDa. ( [Note](#) )

## Properties

|                      |  |
|----------------------|--|
| <b>Form</b>          | Liquid   |
| <b>Buffer</b>        | PBS, 50% Glycerol  |
| <b>Preservative</b>  | 0.05% ProClin 300  |
| <b>Storage</b>       | Store as concentrated solution. Centrifuge briefly prior to opening vial. For short-term storage (1-2 weeks), store at 4°C. For long-term storage, aliquot and store at -20°C or below. Avoid multiple freeze-thaw cycles. |
| <b>Concentration</b> | Batch dependent (Please refer to the vial label for the specific concentration.)   |
| <b>Immunogen</b>     | Recombinant fusion protein containing a sequence corresponding to amino acids 30-260 of human TAPBP (NP_757345.2).   |
| <b>Purification</b>  | Purified by affinity chromatography  |
| <b>Conjugation</b>   | Unconjugated   |

### Note

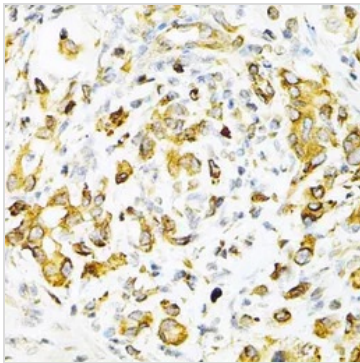
For laboratory research use only. Not for any clinical, therapeutic, or diagnostic use in humans or animals. Not for animal or human consumption.

Purchasers shall not, and agree not to enable third parties to, analyze, copy, reverse engineer or otherwise attempt to determine the structure or sequence of the product.



For full product information, images and publications, please visit our [website](#).

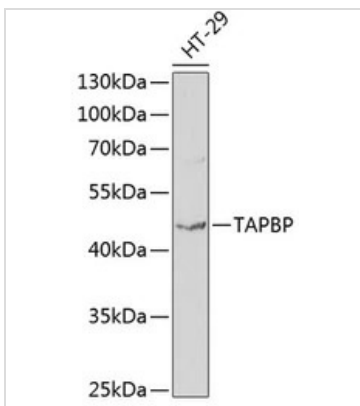
## DATA IMAGES



### GTX16401 IHC-P Image

IHC-P analysis of human gastric cancer tissue using GTX16401 Tapasin antibody.

Dilution : 1:200

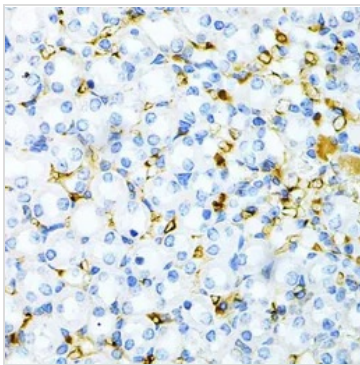


### GTX16401 WB Image

WB analysis of HT-29 cell lysate using GTX16401 Tapasin antibody.

Dilution : 1:1000

Loading : 25µg per lane



### GTX16401 IHC-P Image

IHC-P analysis of mouse kidney tissue using GTX16401 Tapasin antibody.

Dilution : 1:200



For full product information, images and publications, please visit our [website](https://www.genetex.com).