

Tropomyosin 2 antibody

Cat. No. GTX16425

Host	Rabbit
Clonality	Polyclonal
Isotype	IgG
Applications	WB, IHC-P, IP
Reactivity	Human, Mouse, Rat

Package
100 µl

Applications

Application Note

*Optimal dilutions/concentrations should be determined by the researcher.

Suggested dilution	Recommended dilution
WB	1:500 - 1:1000
IHC-P	1:50 - 1:100
IP	1:50 - 1:100

Not tested in other applications.

Calculated MW 33 kDa. ([Note](#))

Properties

Form	Liquid
Buffer	PBS, 50% Glycerol
Preservative	0.02% Sodium azide
Storage	Store as concentrated solution. Centrifuge briefly prior to opening vial. For short-term storage (1-2 weeks), store at 4°C. For long-term storage, aliquot and store at -20°C or below. Avoid multiple freeze-thaw cycles.
Concentration	Batch dependent (Please refer to the vial label for the specific concentration.)
Immunogen	A synthetic peptide of human TPM2
Purification	Purified by affinity chromatography
Conjugation	Unconjugated

Note

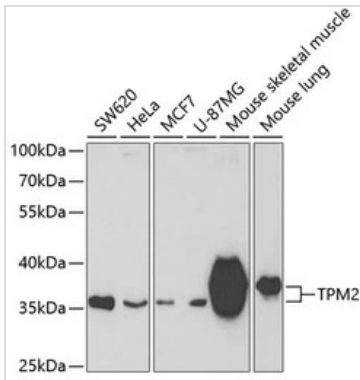
For laboratory research use only. Not for any clinical, therapeutic, or diagnostic use in humans or animals. Not for animal or human consumption.

Purchasers shall not, and agree not to enable third parties to, analyze, copy, reverse engineer or otherwise attempt to determine the structure or sequence of the product.



For full product information, images and publications, please visit our [website](#).

DATA IMAGES

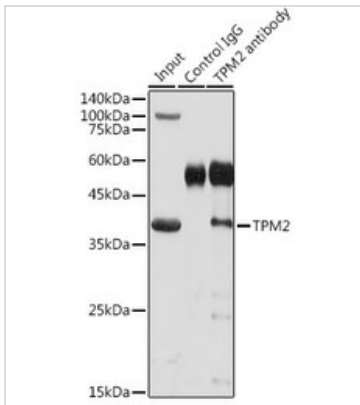


GTX16425 WB Image

WB analysis of various sample lysates using GTX16425 Tropomyosin 2 antibody.

Dilution : 1:400

Loading : 25µg per lane

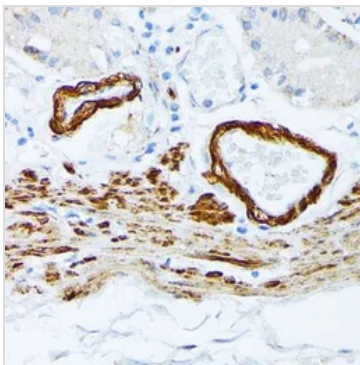


GTX16425 IP Image

IP analysis of mouse skeletal muscle tissue lysate using GTX16425 Tropomyosin 2 antibody.

Antibody amount : 3µg / 300µg lysate

Dilution : 1:1000



GTX16425 IHC-P Image

IHC-P analysis of human stomach tissue using GTX16425 Tropomyosin 2 antibody.

Dilution : 1:100



For full product information, images and publications, please visit our [website](https://www.genetex.com).