

DAP12 antibody

Cat. No. GTX16462

Host	Rabbit
Clonality	Polyclonal
Isotype	IgG
Applications	WB, IP
Reactivity	Human, Mouse

Package
100 µg

Applications

Application Note

IP: Use at a concentration of 2-4 µg/mg of protein lysate. WB: Use at an assay dependent dilution. Optimal dilutions/concentrations should be determined by the end user.

Calculated MW 12 kDa. ([Note](#))

Properties

Form	Liquid
Buffer	PBS
Preservative	0.08% Sodium azide
Storage	Store as concentrated solution. Centrifuge briefly prior to opening vial. For short-term storage (1-2 weeks), store at 4°C. For long-term storage, aliquot and store at -20°C or below. Avoid multiple freeze-thaw cycles.
Concentration	1 mg/ml (Please refer to the vial label for the specific concentration.)
Immunogen	Recombinant full length protein (Human).
Purification	IgG fraction
Conjugation	Unconjugated

Note

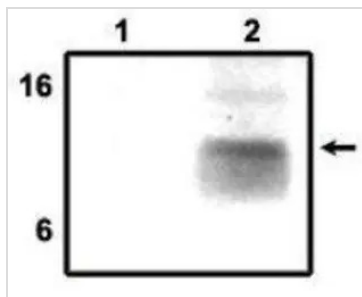
For laboratory research use only. Not for any clinical, therapeutic, or diagnostic use in humans or animals. Not for animal or human consumption.

Purchasers shall not, and agree not to enable third parties to, analyze, copy, reverse engineer or otherwise attempt to determine the structure or sequence of the product.



For full product information, images and publications, please visit our [website](#).

DATA IMAGES



GTx16462 IP Image

GTx16462 at 3g (per mg of protein lysate) detecting DAP12 on MHC ClassI positive cells (Lane 1) and NKp44 positive cells (Lane 2) by immunoprecipitation.



For full product information, images and publications, please visit our [website](#).