

LSD1 antibody [1E5-H2]

Cat. No. GTX16471

Host	Mouse
Clonality	Monoclonal
Isotype	IgG1
Applications	WB, ICC/IF, IP, Immunodiffusion
Reactivity	Human, Monkey

Package
100 µl

Applications

Calculated MW 93 kDa. ([Note](#))

Properties

Form	Liquid
Buffer	PBS, 0.5% BSA, 50% glycerol
Preservative	0.02% Sodium azide
Storage	Store as concentrated solution. Centrifuge briefly prior to opening vial. For short-term storage (1-2 weeks), store at 4°C. For long-term storage, aliquot and store at -20°C or below. Avoid multiple freeze-thaw cycles.
Concentration	Batch dependent (Please refer to the vial label for the specific concentration.)
Immunogen	Purified recombinant human KDM1/LSD1 protein fragments expressed in E.coli.
Purification	Purified by affinity chromatography
Conjugation	Unconjugated

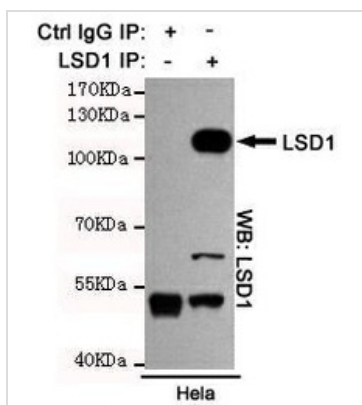
Note For laboratory research use only. Not for any clinical, therapeutic, or diagnostic use in humans or animals. Not for animal or human consumption.

Purchasers shall not, and agree not to enable third parties to, analyze, copy, reverse engineer or otherwise attempt to determine the structure or sequence of the product.

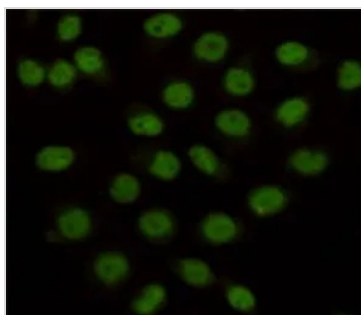


For full product information, images and publications, please visit our [website](#).

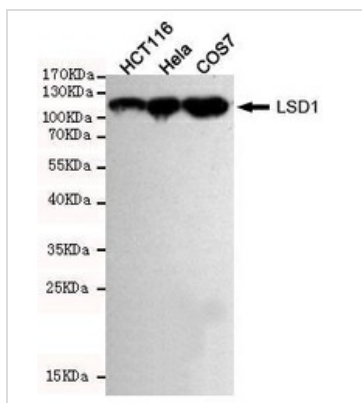
DATA IMAGES

**GTX16471 IP Image**

IP analysis was performed with HeLa lysates and either control IgG or LSD1 antibody [1E5-H2]. The precipitates were detected by the same antibody.

**GTX16471 ICC/IF Image**

ICC/IF analysis of HeLa cells using LSD1 antibody [1E5-H2] at a dilution of 1:100.

**GTX16471 WB Image**

WB analysis of various cell lysates using LSD1 antibody [1E5-H2] at a dilution of 1:1000.



For full product information, images and publications, please visit our [website](#).