

BRG1 antibody [4E11-E11-G11]

Cat. No. GTX16472

Host	Mouse
Clonality	Monoclonal
Isotype	IgG1
Applications	WB, IP, Immunodiffusion
Reactivity	Human

Package
100 µl

Applications

Calculated MW 185 kDa. ([Note](#))

Properties

Form	Liquid
Buffer	PBS, 0.5% BSA, 50% glycerol
Preservative	0.02% Sodium azide
Storage	Store as concentrated solution. Centrifuge briefly prior to opening vial. For short-term storage (1-2 weeks), store at 4°C. For long-term storage, aliquot and store at -20°C or below. Avoid multiple freeze-thaw cycles.
Concentration	Batch dependent (Please refer to the vial label for the specific concentration.)
Immunogen	Purified recombinant human BRG1 protein fragments expressed in E.coli.
Purification	Purified by affinity chromatography
Conjugation	Unconjugated

Note

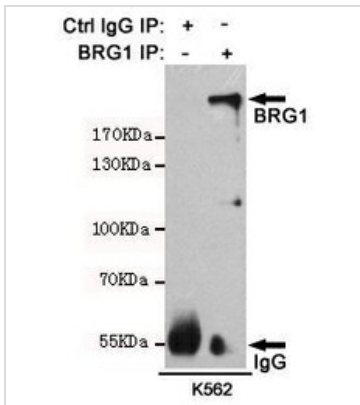
For laboratory research use only. Not for any clinical, therapeutic, or diagnostic use in humans or animals. Not for animal or human consumption.

Purchasers shall not, and agree not to enable third parties to, analyze, copy, reverse engineer or otherwise attempt to determine the structure or sequence of the product.



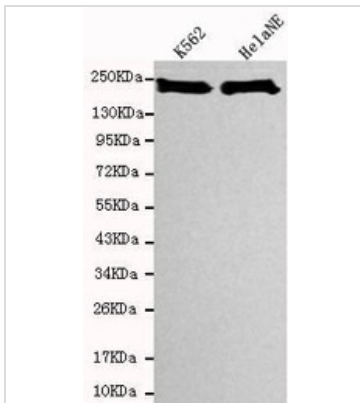
For full product information, images and publications, please visit our [website](#).

DATA IMAGES



GTX16472 IP Image

IP analysis was performed with HeLa lysates and either control IgG or BRG1 antibody [4E11-E11-G11]. The precipitates were detected by the same antibody.



GTX16472 WB Image

WB analysis of various cell lysates using BRG1 antibody [4E11-E11-G11] at a dilution of 1:1000.



For full product information, images and publications, please visit our [website](#).