

PP2A alpha + PP2A beta antibody [2G2-H6-G11-E8]

Cat. No. GTX16478

Host	Mouse
Clonality	Monoclonal
Isotype	IgG2a
Applications	WB, IP, Immunodiffusion
Reactivity	Human, Mouse, Rat

Package
100 µl

Properties

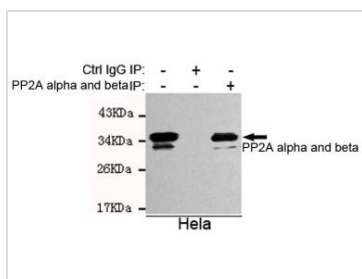
Form	Liquid
Buffer	0.1M Tris-Glycine (pH7.4), 150mM NaCl, 50% Glycerol
Preservative	0.02% Sodium azide
Storage	Store as concentrated solution. Centrifuge briefly prior to opening vial. For short-term storage (1-2 weeks), store at 4°C. For long-term storage, aliquot and store at -20°C or below. Avoid multiple freeze-thaw cycles.
Concentration	Batch dependent (Please refer to the vial label for the specific concentration.)
Immunogen	Purified recombinant human full length PP2A beta protein expressed in E.coli
Purification	Affinity purified
Conjugation	Unconjugated

Note

For laboratory research use only. Not for any clinical, therapeutic, or diagnostic use in humans or animals. Not for animal or human consumption.

Purchasers shall not, and agree not to enable third parties to, analyze, copy, reverse engineer or otherwise attempt to determine the structure or sequence of the product.

DATA IMAGES

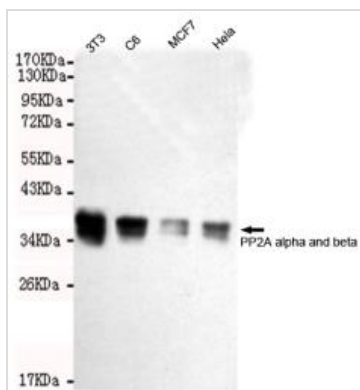


GTX16478 IP Image

IP analysis was performed with HeLa lysate and either control IgG or PP2A alpha/beta antibody [2G2-H6-G11-E8]. The precipitates were detected by the same antibody.



For full product information, images and publications, please visit our [website](https://www.genetex.com).



GTX16478 WB Image

WB analysis of various cell lysates using PP2A alpha/beta antibody [2G2-H6-G11-E8] at a dilution of 1:2000.



For full product information, images and publications, please visit our [website](https://www.genetex.com).