

PI3 kinase p85 beta antibody [8D9-D5-F8]

Cat. No. GTX16481

| | |
|---------------------|---------------------|
| Host | Mouse |
| Clonality | Monoclonal |
| Isotype | IgG1 |
| Applications | WB, Immunodiffusion |
| Reactivity | Human, Mouse, Rat |

Package
100 µl

Applications

Calculated MW 82 kDa. ([Note](#))

Properties

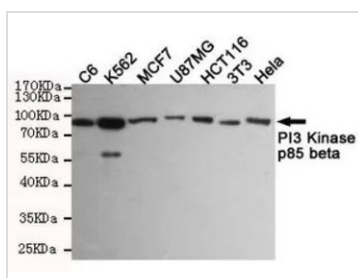
| | |
|----------------------|--|
| Form | Liquid |
| Buffer | PBS, 0.5% BSA, 50% glycerol |
| Preservative | 0.02% Sodium azide |
| Storage | Store as concentrated solution. Centrifuge briefly prior to opening vial. For short-term storage (1-2 weeks), store at 4°C. For long-term storage, aliquot and store at -20°C or below. Avoid multiple freeze-thaw cycles. |
| Concentration | Batch dependent (Please refer to the vial label for the specific concentration.) |
| Immunogen | Purified recombinant human PI3 Kinase p85 beta protein fragments expressed in E.coli. |
| Purification | Purified by affinity chromatography |
| Conjugation | Unconjugated |

Note

For laboratory research use only. Not for any clinical, therapeutic, or diagnostic use in humans or animals. Not for animal or human consumption.

Purchasers shall not, and agree not to enable third parties to, analyze, copy, reverse engineer or otherwise attempt to determine the structure or sequence of the product.

DATA IMAGES

**GTX16481 WB Image**

WB analysis of various cell lysates using PI3K p85 beta antibody [8D9-D5-F8] at a dilution of 1:1000.



For full product information, images and publications, please visit our [website](#).