

Hsp90 beta antibody [3B9-D4-G4]

Cat. No. GTX16486

Host	Mouse
Clonality	Monoclonal
Isotype	IgG1
Application	WB, ICC/IF, IP, Immunodiffusion
Reactivity	Human, Mouse, Rat, Hamster, Monkey

Package

100 µl

APPLICATION

Calculated MW 83 kDa. ([Note](#))

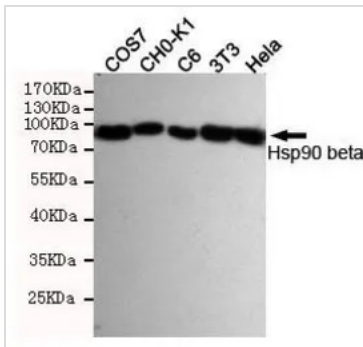
PROPERTIES

Form	Liquid
Buffer	PBS, 0.5% BSA, 50% glycerol
Preservative	0.02% Sodium azide
Storage	Store as concentrated solution. Centrifuge briefly prior to opening vial. For short-term storage (1-2 weeks), store at 4°C. For long-term storage, aliquot and store at -20°C or below. Avoid multiple freeze-thaw cycles.
Concentration	Batch dependent (Please refer to the vial label for the specific concentration.)
Immunogen	Purified recombinant human Hsp90 beta protein fragments expressed in E.coli
Purification	Purified by affinity chromatography
Conjugation	Unconjugated
Note	<p>For laboratory research use only. Not for any clinical, therapeutic, or diagnostic use in humans or animals. Not for animal or human consumption.</p> <p>Purchasers shall not, and agree not to enable third parties to, analyze, copy, reverse engineer or otherwise attempt to determine the structure or sequence of the product.</p>



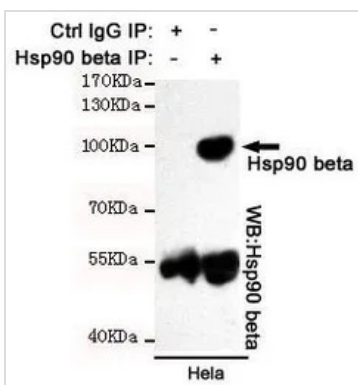
For full product information, images and publications, please visit our [website](#).

DATA IMAGES



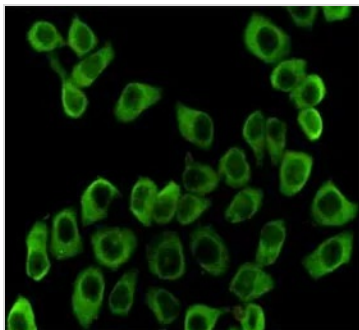
GTX16486 WB Image

WB analysis of various cell lysates using Hsp90 beta antibody [3B9-D4-G4] at a dilution of 1:2000.



GTX16486 IP Image

IP analysis was performed with HeLa lysates and either control IgG or Hsp90 beta antibody [3B9-D4-G4]. The precipitates were detected by the same antibody.



GTX16486 ICC/IF Image

ICC/IF analysis of HeLa cells using anti-Hsp90 beta antibody [3B9-D4-G4] at a dilution of 1:200.



For full product information, images and publications, please visit our [website](https://www.genetex.com).