

## CHAF1B antibody [SS 24 1-68]

**Cat. No. GTX16494**

<b>Host</b>	Mouse
<b>Clonality</b>	Monoclonal
<b>Isotype</b>	IgG1
<b>Applications</b>	WB, ICC/IF, IP
<b>Reactivity</b>	Human, Mouse, Monkey, Primate

Package

50 µl

## Applications

**Application Note**

\*Optimal dilutions/concentrations should be determined by the researcher.

Suggested dilution	Recommended dilution
WB	1:1000
ICC/IF	1:10 - 1:2000
IP	0.1 - 1 µg

Not tested in other applications.

**Calculated MW** 61 kDa. ([Note](#))

## Properties

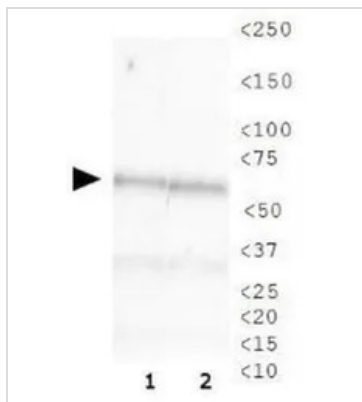
**Form** Liquid**Buffer** Ascites**Preservative** 0.1% Sodium azide**Storage** Store as concentrated solution. Centrifuge briefly prior to opening vial. For short-term storage (1-2 weeks), store at 4°C. For long-term storage, aliquot and store at -20°C or below. Avoid multiple freeze-thaw cycles.**Immunogen** Recombinant human CHAF1B [UniProt# Q13112]**Purification** Unpurified**Conjugation** Unconjugated**Note**

For laboratory research use only. Not for any clinical, therapeutic, or diagnostic use in humans or animals. Not for animal or human consumption.

Purchasers shall not, and agree not to enable third parties to, analyze, copy, reverse engineer or otherwise attempt to determine the structure or sequence of the product.

For full product information, images and publications, please visit our [website](#).

## DATA IMAGES

**GTX16494 WB Image**

WB analysis of (1) HeLa and (2) COS-7 cell lysate using GTX16494 CHAF1B antibody [SS 24 1-68].



For full product information, images and publications, please visit our [website](#).