

Glypican 4 antibody [AT51E3]

Cat. No. GTX16498

Host	Mouse
Clonality	Monoclonal
Isotype	IgG2a
Applications	WB, ICC/IF, FCM, ELISA
Reactivity	Human

Package
100 µl

Applications

Application Note

WB: 1:1000. ICC/IF: 1:200. FACS: 1:200

Calculated MW 62 kDa. ([Note](#))

Properties

Form	Liquid
Buffer	PBS, 10% Glycerol
Preservative	0.02% Sodium azide
Storage	Store as concentrated solution. Centrifuge briefly prior to opening vial. For short-term storage (1-2 weeks), store at 4°C. For long-term storage, aliquot and store at -20°C or below. Avoid multiple freeze-thaw cycles.
Concentration	1 mg/ml (Please refer to the vial label for the specific concentration.)
Immunogen	Recombinant human GPC4 (401-529aa)
Purification	By protein-A affinity chromatography
Conjugation	Unconjugated

Note

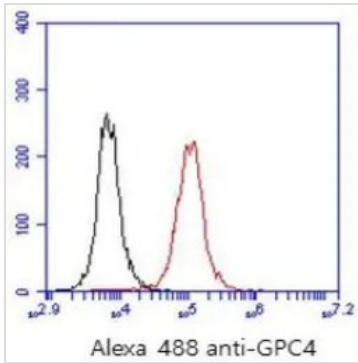
For laboratory research use only. Not for any clinical, therapeutic, or diagnostic use in humans or animals. Not for animal or human consumption.

Purchasers shall not, and agree not to enable third parties to, analyze, copy, reverse engineer or otherwise attempt to determine the structure or sequence of the product.



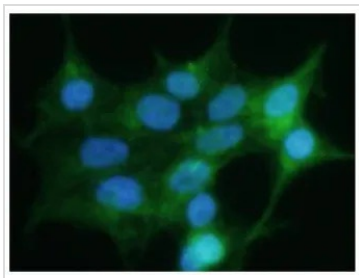
For full product information, images and publications, please visit our [website](#).

DATA IMAGES



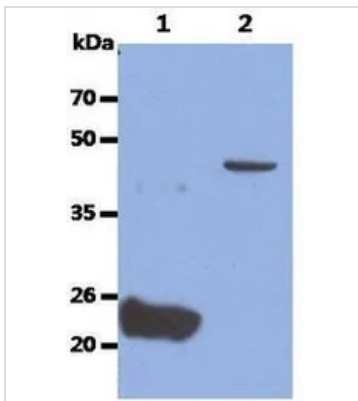
GTX16498 FCM Image

FACS analysis of 293T cells using an isotype control (black) or GPC4 antibody [AT51E3] at 2-5ug for 1,000,000 cells (red).



GTX16498 ICC/IF Image

ICC/IF analysis of 293T cells using DAPI (blue) and GPC4 antibody [AT51E3] at a dilution of 1:200 (green).



GTX16498 WB Image

WB analysis of (1) recombinant human GPC4 (50ng) and (2) Ramos lysate (40ug) using GPC4 antibody [AT51E3] at a dilution of 1:1000.



For full product information, images and publications, please visit our [website](https://www.genetex.com).