

# Cytokeratin 20 antibody [AT10D8]

**Cat. No. GTX16500**

<b>Host</b>	Mouse
<b>Clonality</b>	Monoclonal
<b>Isotype</b>	IgG2a
<b>Applications</b>	WB, ICC/IF, FCM, ELISA
<b>Reactivity</b>	Human

**Package**  
100 µl

## Applications

### Application Note

WB: 1:3000. FACS: 1:200

**Calculated MW** 48 kDa. ( [Note](#) )

## Properties

<b>Form</b>	Liquid
<b>Buffer</b>	PBS, 10% Glycerol
<b>Preservative</b>	0.02% Sodium azide
<b>Storage</b>	Store as concentrated solution. Centrifuge briefly prior to opening vial. For short-term storage (1-2 weeks), store at 4°C. For long-term storage, aliquot and store at -20°C or below. Avoid multiple freeze-thaw cycles.
<b>Concentration</b>	1 mg/ml (Please refer to the vial label for the specific concentration.)
<b>Immunogen</b>	Recombinant human KRT20 (1-424aa)
<b>Purification</b>	By protein-A affinity chromatography
<b>Conjugation</b>	Unconjugated

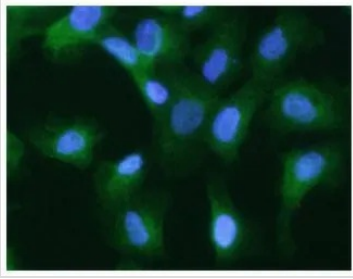
### Note

For laboratory research use only. Not for any clinical, therapeutic, or diagnostic use in humans or animals. Not for animal or human consumption.

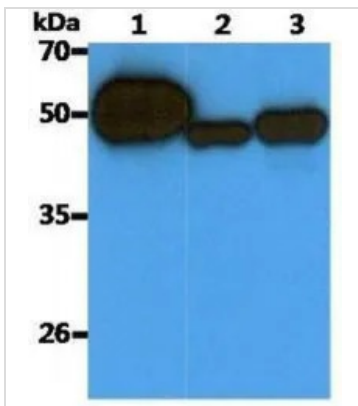
Purchasers shall not, and agree not to enable third parties to, analyze, copy, reverse engineer or otherwise attempt to determine the structure or sequence of the product.



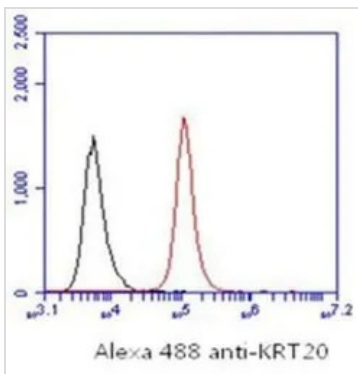
For full product information, images and publications, please visit our [website](#).

**DATA IMAGES**

**GTx16500 ICC/IF Image**

ICC/IF analysis of A549 cells using DAPI (blue) and Cytokeratin 20 antibody [AT10D8] at a dilution of 1:200 (green).


**GTx16500 WB Image**

WB analysis of (1) recombinant human Cytokeratin 20 (25ng), (2) HeLa and (3) A431 lysates (40ug of lysates) using Cytokeratin 20 antibody [AT10D8] at a dilution of 1:3000.


**GTx16500 FCM Image**

FACS analysis of A549 cells using an isotype control (black) or Cytokeratin 20 antibody [AT10D8] at 2-5ug for 1,000,000 cells (red).



For full product information, images and publications, please visit our [website](http://www.genetex.com).