

Tyrosine Hydroxylase (phospho Ser40) antibody

Cat. No. GTX16557

Host	Rabbit
Clonality	Polyclonal
Isotype	IgG
Applications	WB, ICC/IF, IHC-P, IHC-Fr, IHC
Reactivity	Mouse, Rat, Starling, Bird, Sparrow

References (8)

Package

100 µl

Applications

Application Note

*Optimal dilutions/concentrations should be determined by the researcher.

Suggested dilution	Recommended dilution
WB	1:1000
ICC/IF	1:10 - 1:500
IHC-P	Assay dependent
IHC-Fr	1:1000
IHC	1:1000

Not tested in other applications.

Calculated MW 56 kDa. ([Note](#))

Product Note

Specific for the ~60k tyrosine hydroxylase protein phosphorylated at Ser40. Some higher molecular weight bands may be detected by the antibody depending upon the brain region being studied, protein loads and the detection methods used. The antibody has three orders of magnitude selectivity over dephospho TH.

Properties

Form	Liquid
Buffer	10mM HEPES, 150mM NaCl, 0.01% BSA, 50% Glycerol
Preservative	No preservatives
Storage	Store as concentrated solution. Centrifuge briefly prior to opening vial. For short-term storage (1-2 weeks), store at 4°C. For long-term storage, aliquot and store at -20°C or below. Avoid multiple freeze-thaw cycles.
Concentration	0.1 mg/ml (Please refer to the vial label for the specific concentration.)
Immunogen	Phosphopeptide corresponding to amino acid residues surrounding the phospho-Ser40 of rat tyrosine hydroxylase.
Purification	Purified by antigen-affinity chromatography
Conjugation	Unconjugated

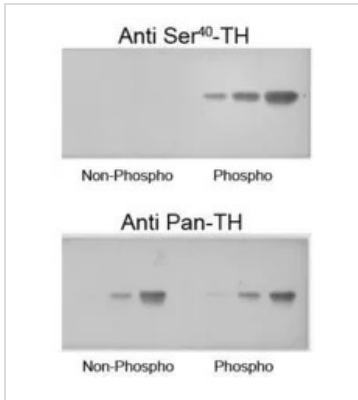


For full product information, images and publications, please visit our [website](#).

For laboratory research use only. Not for any clinical, therapeutic, or diagnostic use in humans or animals. Not for animal or human consumption.

Note

Purchasers shall not, and agree not to enable third parties to, analyze, copy, reverse engineer or otherwise attempt to determine the structure or sequence of the product.

DATA IMAGES

GTX16557 WB Image

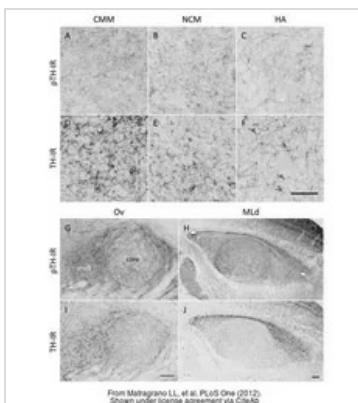
WB analysis of recombinant phospho-TH and non-phospho-TH protein using GTX16557 Tyrosine Hydroxylase (phospho Ser40) antibody.


GTX16557 IHC-Fr Image

IHC-Fr analysis of retina tissue using GTX16557 Tyrosine Hydroxylase (phospho Ser40) antibody. The pan-TH antibody shows extensive labeling in this photomicrograph of the retina. In contrast, the phospho-TH antibody selectively labels only the two amacrine cells in this light-stimulated retina example.

Left : pan TH antibody

Right : Tyrosine Hydroxylase (phospho Ser40) antibody


GTX16557 IHC-Fr Image

The data was published in the journal PLoS One in 2012. [PMID: 22724011](https://doi.org/10.1371/journal.pone.0227240)



For full product information, images and publications, please visit our [website](https://www.genetex.com).