

IL17 Receptor alpha antibody

Cat. No. GTX16598

Host	Rabbit
Clonality	Polyclonal
Isotype	IgG
Applications	WB, IHC-P, ELISA
Reactivity	Human, Mouse, Rat

References (1)

Package

100 µg

Applications

Application Note

*Optimal dilutions/concentrations should be determined by the researcher.

Suggested dilution	Recommended dilution
WB	1 - 2 µg/mL
IHC-P	Assay dependent
ELISA	Assay dependent

Not tested in other applications.

Calculated MW 96 kDa. ([Note](#))

Product Note Multiple isoforms of IL-17RA are known to exist. This antibody is predicted to not cross-react with other IL-17 receptor subunits.

Properties

Form	Liquid
Buffer	PBS
Preservative	0.02% Sodium azide
Storage	Store as concentrated solution. Centrifuge briefly prior to opening vial. For short-term storage (1-2 weeks), store at 4°C. For long-term storage, aliquot and store at -20°C or below. Avoid multiple freeze-thaw cycles.
Concentration	1 mg/ml (Please refer to the vial label for the specific concentration.)
Immunogen	IL-17RA antibody was raised against an 18 amino acid peptide near the amino terminus of human IL-17RA. The immunogen is located within amino acids 150 - 200 of IL-17RA.
Purification	Purified by antigen-affinity chromatography
Conjugation	Unconjugated



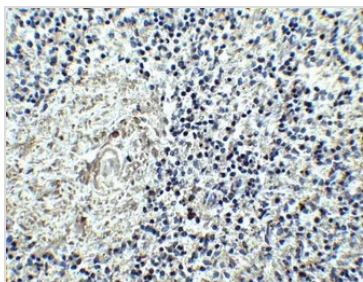
For full product information, images and publications, please visit our [website](#).

Date 2026 / 01 / 07 Page 1 of 2

For laboratory research use only. Not for any clinical, therapeutic, or diagnostic use in humans or animals. Not for animal or human consumption.

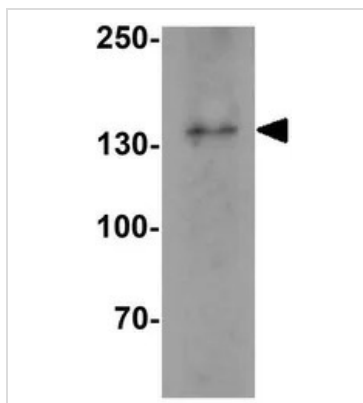
Note

Purchasers shall not, and agree not to enable third parties to, analyze, copy, reverse engineer or otherwise attempt to determine the structure or sequence of the product.

DATA IMAGES

GTX16598 IHC-P Image

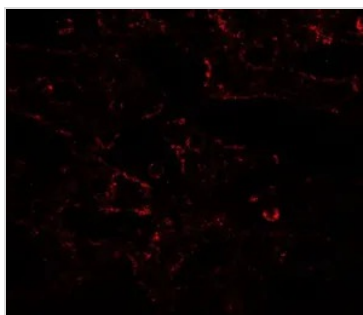
IHC-P analysis of human spleen tissue using GTX16598 IL17 Receptor alpha antibody.

Working concentration : 2.5 µg/ml


GTX16598 WB Image

WB analysis of A-20 cell lysate using GTX16598 IL17 Receptor alpha antibody.

Working concentration : 1 µg/ml


GTX16598 IHC-P Image

IHC-P analysis of human spleen tissue using GTX16598 IL17 Receptor alpha antibody.

Working concentration : 20 µg/ml



For full product information, images and publications, please visit our [website](https://www.genetex.com).