

Cav1.2 antibody

Cat. No. GTX16606

Host	Rabbit
Clonality	Polyclonal
Isotype	IgG
Applications	WB, ICC/IF, IHC-P, IP
Reactivity	Human, Mouse, Rat

Package

50 µl

Applications

Application Note

*Optimal dilutions/concentrations should be determined by the researcher.

Suggested dilution	Recommended dilution
WB	Assay dependent
ICC/IF	Assay dependent
IHC-P	Assay dependent
IP	Assay dependent

Not tested in other applications.

Calculated MW 243 kDa. ([Note](#))

Properties

Form	Liquid
Buffer	PBS, 1% BSA
Preservative	0.05% Sodium azide
Storage	Store as concentrated solution. Centrifuge briefly prior to opening vial. For short-term storage (1-2 weeks), store at 4°C. For long-term storage, aliquot and store at -20°C or below. Avoid multiple freeze-thaw cycles.
Concentration	0.95 mg/ml (Please refer to the vial label for the specific concentration.)
Immunogen	GST fusion protein with residues 1-46 (Intracellular, N-terminus) of rabbit CaV1.2a, with serine 44 replaced with alanine (Accession : P15381).
Purification	Depleted of anti-GST antibodies by affinity chromatography on immobilized GST and purified by antigen-affinity chromatography. From serum
Conjugation	Unconjugated



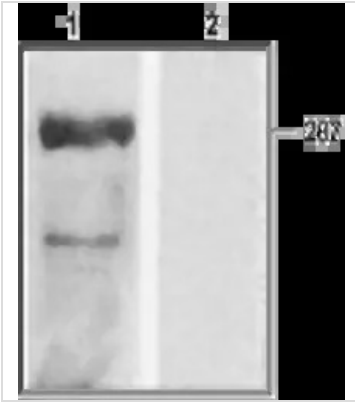
For full product information, images and publications, please visit our [website](#).

For laboratory research use only. Not for any clinical, therapeutic, or diagnostic use in humans or animals. Not for animal or human consumption.

Note

Purchasers shall not, and agree not to enable third parties to, analyze, copy, reverse engineer or otherwise attempt to determine the structure or sequence of the product.

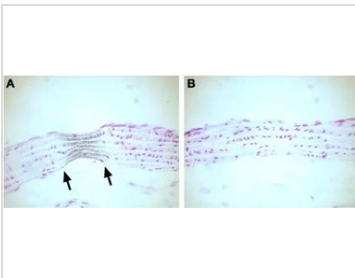
DATA IMAGES



GTx16606 WB Image

WB analysis of rat heart membrane lysates using GTx16606 Cav1.2 antibody preincubated with or without immunogen peptide.

Dilution : 1:200



GTx16606 IHC-P Image

IHC-P analysis of rat heart tissue using GTx16606 Cav1.2 antibody. Cav1.2a was visualized with immunoperoxidase methods and final brown-black diaminobenzidine color product (arrows in A). Cresyl violet is used as the counterstain. When the antibody was pre-incubated with the control peptide antigen, staining was blocked (B).



For full product information, images and publications, please visit our [website](#).