

Orai1 antibody

Cat. No. GTX16613

Host	Rabbit
Clonality	Polyclonal
Isotype	IgG
Applications	WB, ICC/IF, IHC-P, FCM, LCI
Reactivity	Mouse, Rat

References (4)

Package

50 µl

Applications

Application Note

*Optimal dilutions/concentrations should be determined by the researcher.

Suggested dilution	Recommended dilution
WB	Assay dependent
ICC/IF	Assay dependent
IHC-P	Assay dependent
FCM	Assay dependent
LCI	Assay dependent

Not tested in other applications.

Calculated MW 33 kDa. ([Note](#))**Product Note** We do not recommend use of this product for Human samples.

Properties

Form	Liquid
Buffer	PBS, 1% BSA
Preservative	0.05% Sodium azide
Storage	Store as concentrated solution. Centrifuge briefly prior to opening vial. For short-term storage (1-2 weeks), store at 4°C. For long-term storage, aliquot and store at -20°C or below. Avoid multiple freeze-thaw cycles.
Concentration	0.65 mg/ml (Please refer to the vial label for the specific concentration.)
Immunogen	Peptide (C)KFLPLKRQAGQPS, corresponding to amino acid residues 200-212 (2nd extracellular loop) of mouse Orai1 (Accession : Q8BWG9).
Purification	Purified by antigen-affinity chromatography
Conjugation	Unconjugated

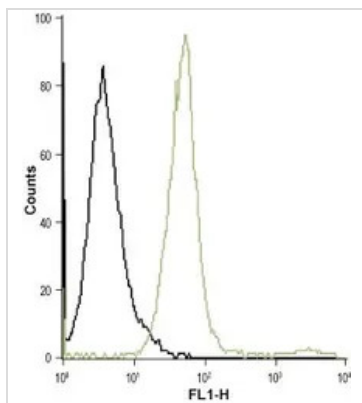


For full product information, images and publications, please visit our [website](#).

For laboratory research use only. Not for any clinical, therapeutic, or diagnostic use in humans or animals. Not for animal or human consumption.

Note

Purchasers shall not, and agree not to enable third parties to, analyze, copy, reverse engineer or otherwise attempt to determine the structure or sequence of the product.

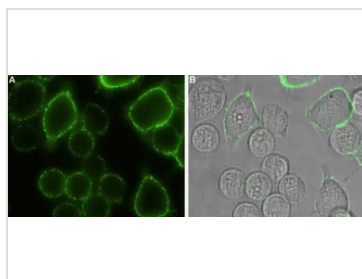
DATA IMAGES

GTX16613 FCM Image

FACS analysis of WEHI cells using GTX16613 Orai1 antibody.

Black : Unstained cell

Green : Cell staining with primary antibody

Antibody amount : 10 μ g antibody / 0.5 x 10⁶ cells

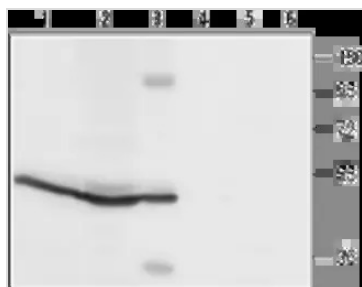

GTX16613 LCI Image

Live cell imaging analysis of intact living RBL cells using GTX16613 Orai1 antibody.

Panel A : Primary antibody

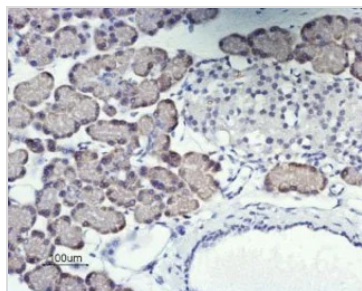
Panel B : Merge of panel A with the live view of the cell

Dilution : 1:100


GTX16613 WB Image

WB analysis of rat spleen (lanes 1 and 4), rat pancreas (lanes 2 and 5), and mouse B-cell lymphoma (WEHI) (lanes 3 and 6) lysates using GTX16613 Orai1 antibody preincubated with or without immunogen peptide.

Dilution : 1:200


GTX16613 IHC-P Image

IHC-P analysis of rat pancreas tissue using GTX16613 Orai1 antibody. Orai1 (brown) is expressed in acinar cells. Hematoxylin is used as the counterstain.

Dilution : 1:50



For full product information, images and publications, please visit our [website](https://www.genetex.com).