

## Orai1 antibody

Cat. No. GTX16613

<b>Host</b>	Rabbit
<b>Clonality</b>	Polyclonal
<b>Isotype</b>	IgG
<b>Applications</b>	WB, ICC/IF, IHC-P, FCM, LCI
<b>Reactivity</b>	Mouse, Rat

References ( 4 )

Package

50 µl

## Applications

## Application Note

\*Optimal dilutions/concentrations should be determined by the researcher.

Suggested dilution	Recommended dilution
WB	Assay dependent
ICC/IF	Assay dependent
IHC-P	Assay dependent
FCM	Assay dependent
LCI	Assay dependent

Not tested in other applications.

**Calculated MW** 33 kDa. ( [Note](#) )**Product Note** We do not recommend use of this product for Human samples.

## Properties

<b>Form</b>	Liquid
<b>Buffer</b>	PBS, 1% BSA
<b>Preservative</b>	0.05% Sodium azide
<b>Storage</b>	Store as concentrated solution. Centrifuge briefly prior to opening vial. For short-term storage (1-2 weeks), store at 4°C. For long-term storage, aliquot and store at -20°C or below. Avoid multiple freeze-thaw cycles.
<b>Concentration</b>	0.65 mg/ml (Please refer to the vial label for the specific concentration.)
<b>Immunogen</b>	Peptide (C)KFLPLKRQAGQPS, corresponding to amino acid residues 200-212 (2nd extracellular loop) of mouse Orai1 (Accession : Q8BWG9).
<b>Purification</b>	Purified by antigen-affinity chromatography
<b>Conjugation</b>	Unconjugated

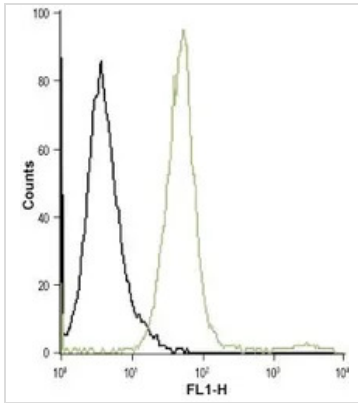


For full product information, images and publications, please visit our [website](#).

For laboratory research use only. Not for any clinical, therapeutic, or diagnostic use in humans or animals. Not for animal or human consumption.

**Note**

Purchasers shall not, and agree not to enable third parties to, analyze, copy, reverse engineer or otherwise attempt to determine the structure or sequence of the product.

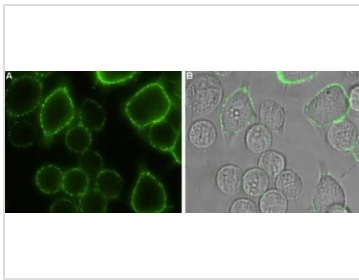
**DATA IMAGES**

**GTX16613 FCM Image**

FACS analysis of WEHI cells using GTX16613 Orai1 antibody.

Black : Unstained cell

Green : Cell staining with primary antibody

Antibody amount : 10 µg antibody / 0.5 x 10<sup>6</sup> cells

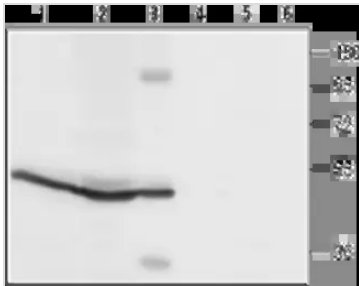

**GTX16613 LCI Image**

Live cell imaging analysis of intact living RBL cells using GTX16613 Orai1 antibody.

Panel A : Primary antibody

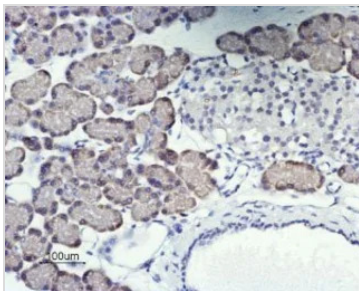
Panel B : Merge of panel A with the live view of the cell

Dilution : 1:100


**GTX16613 WB Image**

WB analysis of rat spleen (lanes 1 and 4), rat pancreas (lanes 2 and 5), and mouse B-cell lymphoma (WEHI) (lanes 3 and 6) lysates using GTX16613 Orai1 antibody preincubated with or without immunogen peptide.

Dilution : 1:200


**GTX16613 IHC-P Image**

IHC-P analysis of rat pancreas tissue using GTX16613 Orai1 antibody. Orai1 (brown) is expressed in acinar cells. Hematoxylin is used as the counterstain.

Dilution : 1:50



For full product information, images and publications, please visit our [website](https://www.genetex.com).