

TRPC7 antibody

Cat. No. GTX16614

Host	Rabbit
Clonality	Polyclonal
Isotype	IgG
Applications	WB, ICC/IF, LCI
Reactivity	Human, Mouse, Rat

Package
50 µl

Applications

Application Note

*Optimal dilutions/concentrations should be determined by the researcher.

Suggested dilution	Recommended dilution
WB	Assay dependent
ICC/IF	Assay dependent
LCI	Assay dependent

Not tested in other applications.

Calculated MW 100 kDa. ([Note](#))

Properties

Form	Liquid
Buffer	PBS, 1% BSA
Preservative	0.05% Sodium azide
Storage	Store as concentrated solution. Centrifuge briefly prior to opening vial. For short-term storage (1-2 weeks), store at 4°C. For long-term storage, aliquot and store at -20°C or below. Avoid multiple freeze-thaw cycles.
Concentration	0.8 mg/ml (Please refer to the vial label for the specific concentration.)
Immunogen	Peptide (C)DQHVQDDTLHNVS, corresponding to amino acid residues 504-516 (2nd extracellular loop) of human TRPC7 (Accession : Q9HCX4).
Purification	Purified by antigen-affinity chromatography
Conjugation	Unconjugated

Note

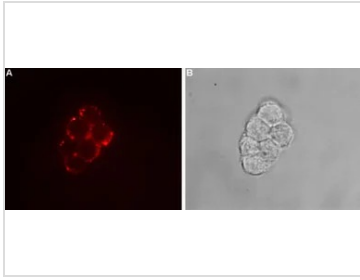
For laboratory research use only. Not for any clinical, therapeutic, or diagnostic use in humans or animals. Not for animal or human consumption.

Purchasers shall not, and agree not to enable third parties to, analyze, copy, reverse engineer or otherwise attempt to determine the structure or sequence of the product.



For full product information, images and publications, please visit our [website](#).

DATA IMAGES

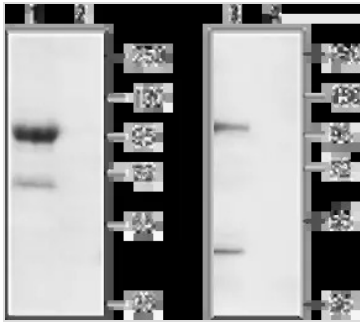
**GTX16614 LCI Image**

Live cell imaging analysis of intact living PC12 cells using GTX16614 TRPC7 antibody.

Panel A : Primary antibody

Panel B : Live view of the cell

Dilution : 1:50

**GTX16614 WB Image**

WB analysis of mouse brain membrane (lanes 1 and 2) and rat brain (lanes 3 and 4) lysates using GTX16614 TRPC7 antibody preincubated with or without immunogen peptide.

Dilution : 1:200



For full product information, images and publications, please visit our [website](#).