

## Mcoln2 antibody

Cat. No. GTX16616

<b>Host</b>	Rabbit
<b>Clonality</b>	Polyclonal
<b>Isotype</b>	IgG
<b>Applications</b>	WB, ICC/IF, IHC-P
<b>Reactivity</b>	Human, Mouse, Rat

Package

50 µl

## Applications

## Application Note

\*Optimal dilutions/concentrations should be determined by the researcher.

Suggested dilution	Recommended dilution
WB	Assay dependent
ICC/IF	Assay dependent
IHC-P	Assay dependent

Not tested in other applications.

**Calculated MW** 65 kDa. ( [Note](#) )

## Properties

<b>Form</b>	Liquid
<b>Buffer</b>	PBS, 1% BSA
<b>Preservative</b>	0.05% Sodium azide
<b>Storage</b>	Store as concentrated solution. Centrifuge briefly prior to opening vial. For short-term storage (1-2 weeks), store at 4°C. For long-term storage, aliquot and store at -20°C or below. Avoid multiple freeze-thaw cycles.
<b>Concentration</b>	0.8 mg/ml (Please refer to the vial label for the specific concentration.)
<b>Immunogen</b>	Peptide (C)RLDFYRLVQVDISFALK, corresponding to amino acid residues 212-228 (Intracellular, N-terminus) of mouse TRPML2 (Accession : Q8K595).
<b>Purification</b>	Purified by antigen-affinity chromatography
<b>Conjugation</b>	Unconjugated

## Note

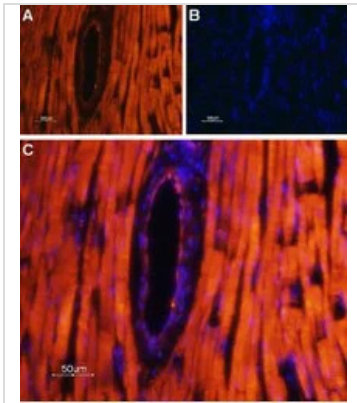
For laboratory research use only. Not for any clinical, therapeutic, or diagnostic use in humans or animals. Not for animal or human consumption.

Purchasers shall not, and agree not to enable third parties to, analyze, copy, reverse engineer or otherwise attempt to determine the structure or sequence of the product.



For full product information, images and publications, please visit our [website](#).

## DATA IMAGES



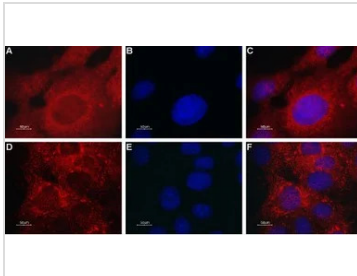
### GTX16616 IHC-P Image

IHC-P analysis of rat heart tissue using GTX16616 Mcoln2 antibody.

Panel A : TRPML2 labeling appears specifically in the cardiac muscle fibers and in a lesser intensity in the endothelium. It does not appear in the smooth muscle fibers of blood vessels.

Panel B : Nuclear staining using DAPI as the counterstain

Panel C : Merged images of A and B



### GTX16616 ICC/IF Image

ICC/IF analysis of C2C12 cells using GTX16616 Mcoln2 antibody.

Panel A,D : Primary antibody

Panel B,E : DNA dye Hoechst 33342

Panel C,F : Merged images of panels A and B

Dilution : 1:50



### GTX16616 WB Image

WB analysis of MCF-7 (lanes 1 and 4), rat heart (lanes 2 and 5) and mouse heart (lanes 3 and 6) lysates using GTX16616 Mcoln2 antibody preincubated with or without immunogen peptide.

Dilution : 1:200



For full product information, images and publications, please visit our [website](https://www.genetex.com).